



مشاريع الابداع العصرية ش.م.م.
Modern Creative Enterprises L L C

Premier choice for
Solid Surfaces Solution



www.mce-oman.com
moderncreativellc@gmail.com
GSM : +968 93891299

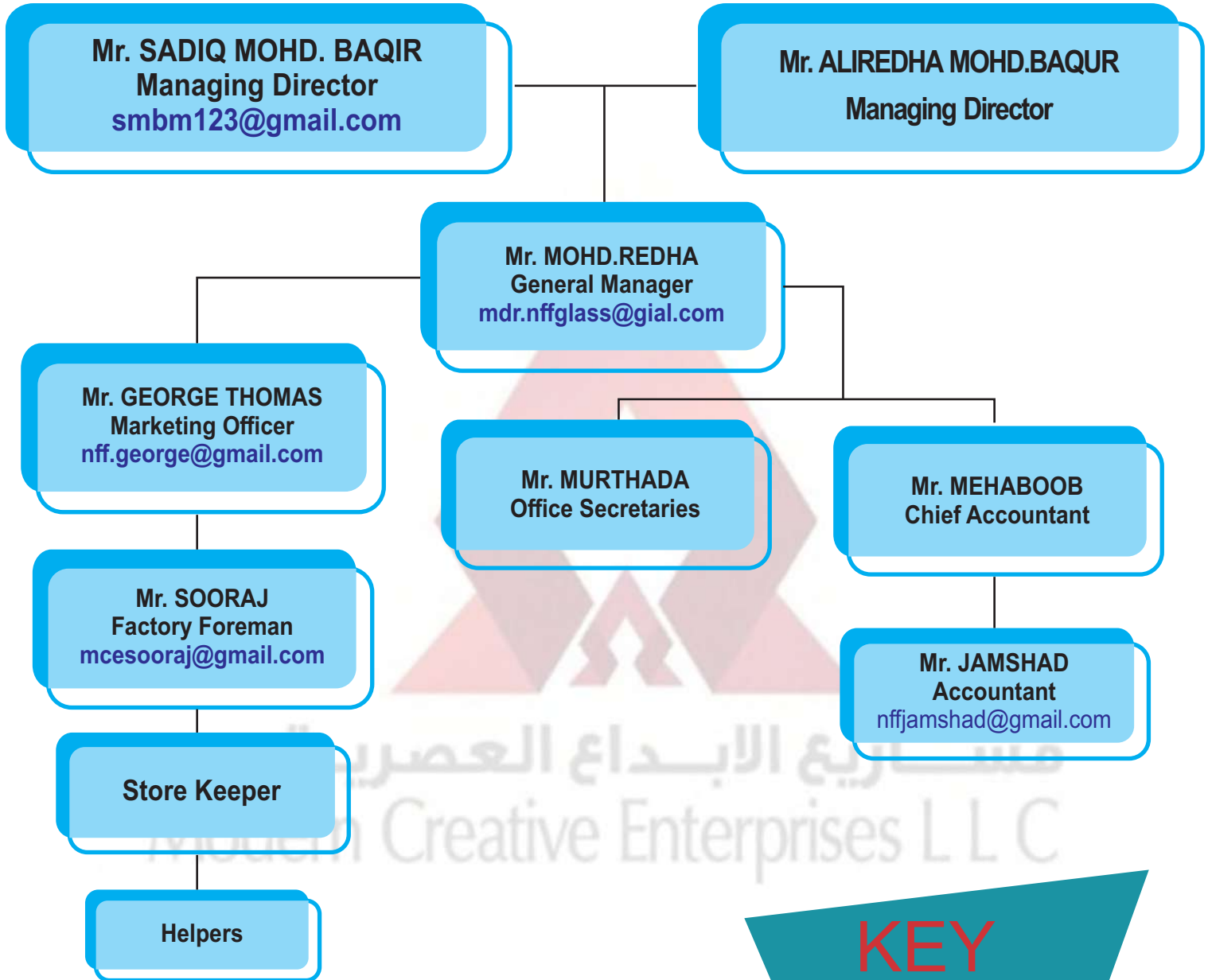


موقعنا
Locate us



Omani

ORGANIZATION CHART



KEY
PERSONNEL



INTRODUCTION

We have pleasure to introduce ourselves as the leading manufacture and suppliers of quality products in SOLID Surface (Brand name of solid top) in the Sultanate of Oman since 2006.

Situated at Mobelaha ,our factory is fully equipped with the latest automatic machinery imported from U.K & Italy. Our infrastructure includes a well-trained team of Designers, Engineers and Technicians and ably assisted by a group of skilled workers to ensure our quality products of International standards in any designs of your choice and timely delivery.

WHY SELECT SOLID TOP

- It is the specialty of SOLID TOP curved bend and round shapes with invisible joints
- Soidtop is the ideal product which shows the excellence of our design to furnish your homes
- We design the product as your concepts and sophisticated manner to keep the reputation of SOLID TOP
- SOLID TOP is the beautiful product, to see, use and enjoy with a great satisfaction.
- SOLID TOP is the ever shine product to beautify your kitchens. It is stain proof, chemical resistance, maintenance free
- It is a life long product and very easily repairs and regains the original finish as ever new. Damage caused by rough use can be rectified and get the finish same as before.

WHAT IS SOLID TOP?

Solid top is a solid surface material made from mineral filler ATH (Aluminum Treated Try-Hydrate) and MMA (Methyl Metha Acrylate Resin). It is used as a decorative material in a variety of application in both commercial and residential environments. Solid top offers design versatility, functionality and durability, supplied in customized shapes, into virtually any design. The shapes are produced via a continuous casting process under strict quality controls. Solid top is the original solid surface



MAINTENANCE

Daily Care:

Solid top is easy to clean. Its fresh, hygienic appearance can be maintained by willing up spills, grease and stains with a damp cloth and soap water using an ammonia-based “hard-surface” cleaner or a mild cream abrasive cleanser or command household degreaser, and then wiped dry with soft cloth. Sinks should be cleansed thoroughly to remove greasy deposits and stains. Once or twice a week they should be partially filled with warm water and 1-2 teaspoons of liquid bleach, then left for a few hours or overnight. To prevent scale build-up from hard water, counters should be damp-wiped and then dried. In difficult area, such as around drains or taps, a household lime-scale remover can be used occasionally.

RECOMMENDATIONS

Heat

Always use a heat protection pad, or protective sink mat for hot cookware, or leave cookware to cool on the hob first. Never put hot pans, particularly cast iron pans, directly onto top or in a sink. Excessive heat can damage any surface.

- ✓ Pouring boiling liquids directly into sink without turning on the cold tap may damage your surface
- ✓ Always use correct-sized pan on the burner and place it centrally .an over hanging pan sources surrounding surfaces.

Chemical Spillage

Accidental spills of strong chemicals(e.g: paint stripper, brush cleaners, metal cleaners, oven cleaners, cleaners containing methylene chloride, acid drain cleaners, acetone based nail varnish removers etc) should be flushed promptly with plenty of soapy water to avoid damaging worktops. For nail varnish spills, non-acetone based remover can be used, and then flushed with water. Undetected or prolonged exposure to chemicals may damage the surface.

Scratches:

- Like all material sold top will develop slight abrasion marks in normal daily use So:
- Never cut or chop on sold top it will score the work surface. Use a chopping board instead.
- Dark, heavily pigmented colours will show scratched , dust and ordinary wear and tear more readily than lighter, textured colours (for more details: refer to the separate colour chart printed on the interior of the book cover or a colour brochure).



SHADES OF SOLID TOP

مشاريح الابداع العصرية ش.م.م.
Modern Creative Enterprises L L C





Milk White



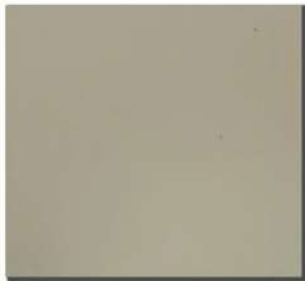
Noir Black



Earl Grey



Beige



Elegant Grey



Dove 2



Dove - OX



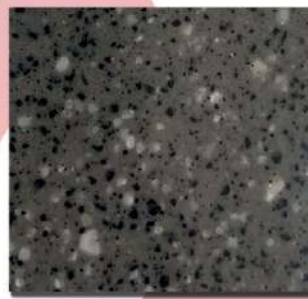
Media 2



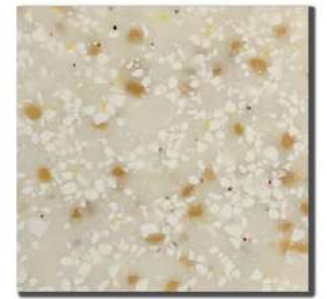
Night Star



Pebbles



Crest



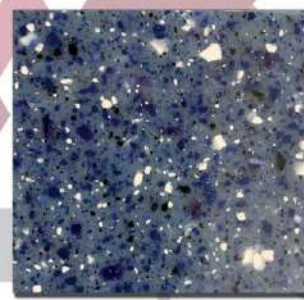
Caramel Ice



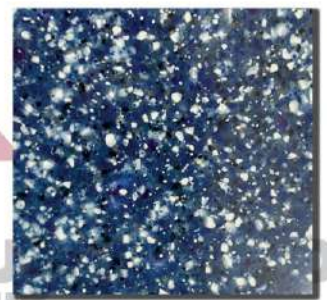
Sun Flower



H2O



Blue Moon



Blue Light



Snow White



Beige Dust



Pink Dust



Grey Dust





C01 Stone



Everest 2



54 White



White Shadow



Sand 01



Lovely Pink



Gravel 3



Beach 710



Mojave



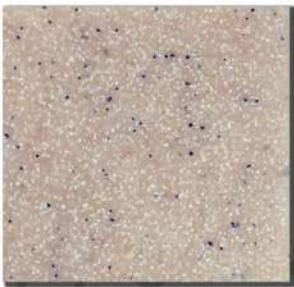
Sand 06



Tan Brown



Sienna Brown



Ink Pink



Melon



Rosy 3



Pink Passion



Hot RED



Berry Red

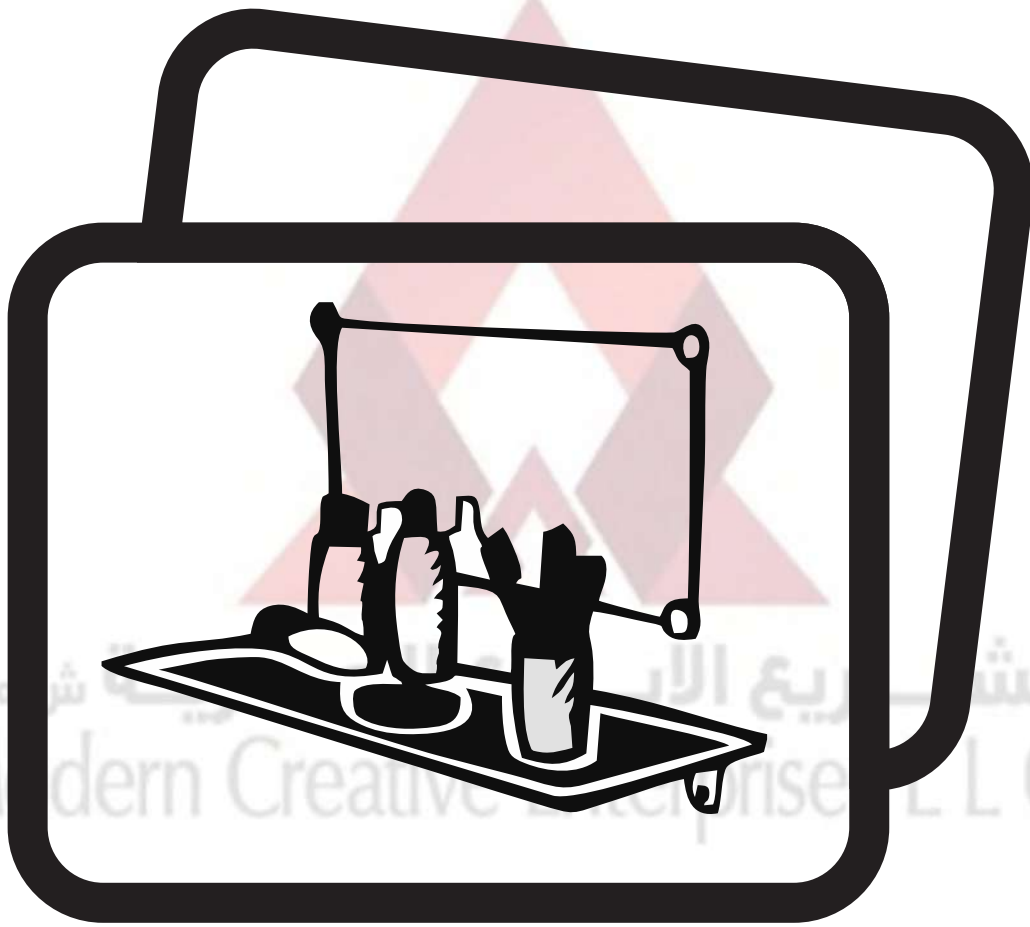


Mint Ice



Pine forest



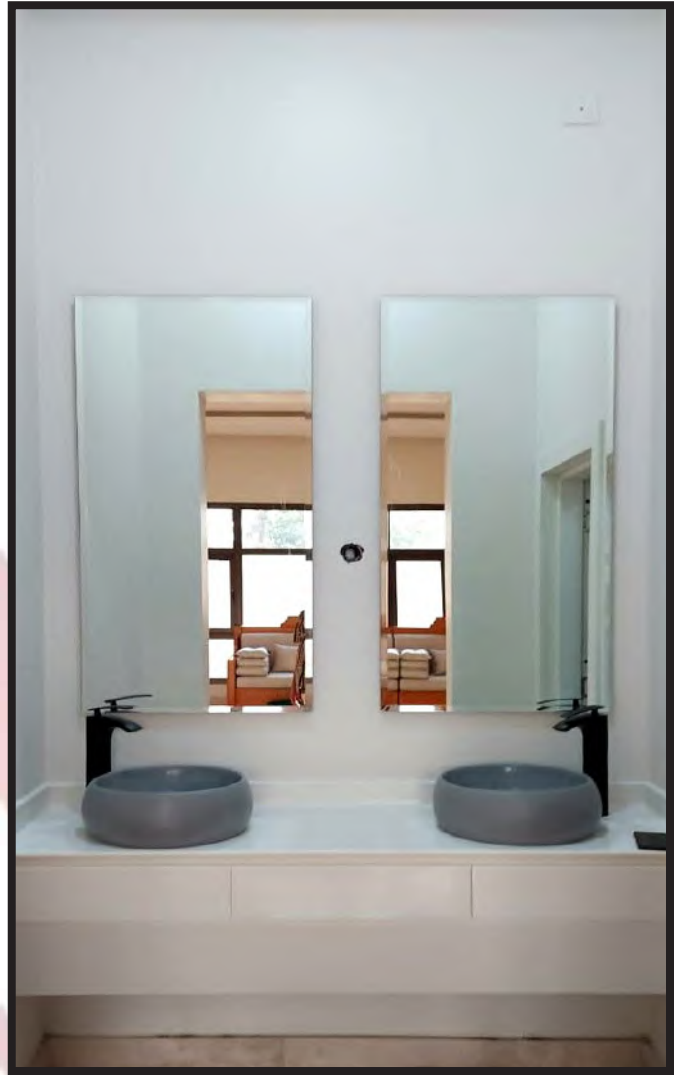


GALLERY



PRIVATE PROJECTS

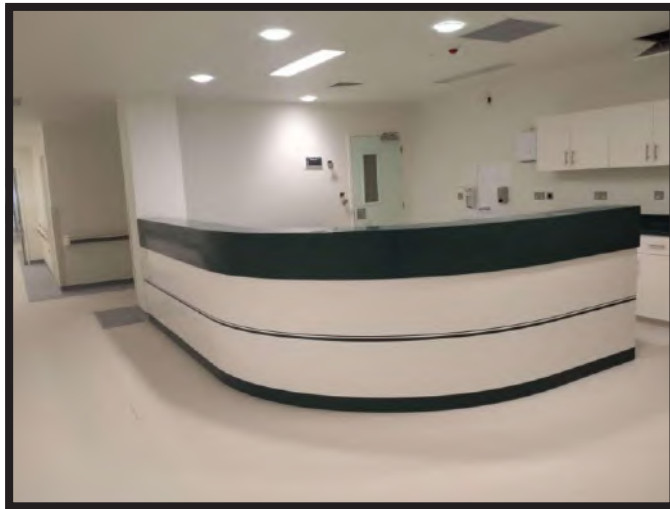






COMMERCIAL PROJECT









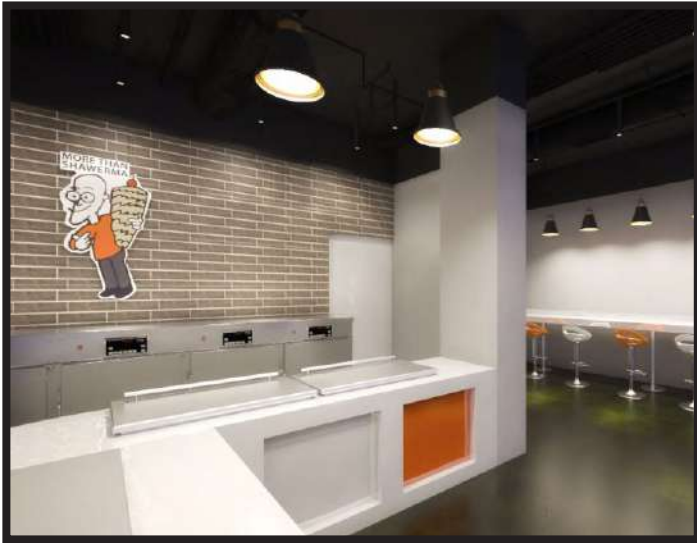


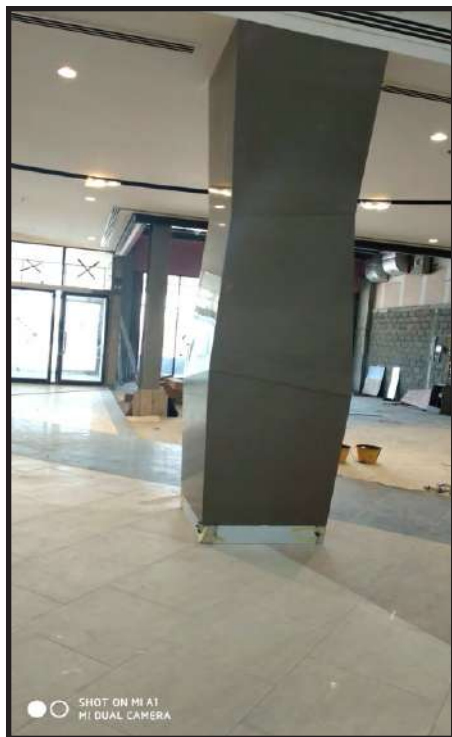
مسقط مول
Mall of Muscat

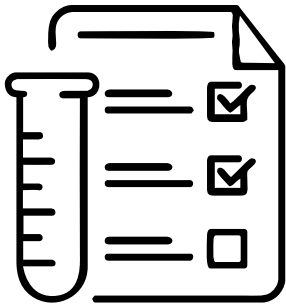


أكواريوم عمان
Oman Aquarium









TEST REPORTS

مشاريح الابداع العصرية ش.م.م.
Modern Creative Enterprises L L C





MUSCAT

Report No. : WL3- 5569
Date of Issue. : 6th October 2020

TEST REPORT
CLASSIFICATION OF THE
SURFACE SPREAD OF FLAME

Client Request Ref. : Not Given

Wimpey Client : **Modern Creative Enterprises LLC**
Muscat, Sultanate of Oman

Sample Description : **Decorative Solid Surfacing Material**

Sample Information Provided by Client

Client Sample ID : Decorative Solid Surfacing Material (Solid Top)
Brand Name : **SOLID TOP**
Source : Modern Creative Enterprises LLC
Sampled by : Client **Date of Sampling** : Not Given
Sample Submitted by : Client **Sampling Cert. No** : N/A

Laboratory Information

Wimpey Sample ID : C20-5569 **Sample Matrix** : Solid
Sample Received On : 21/09/2020 **Date Tested** : 28/09/20 – 01/10/20
Test Location(S) : Wimpey Lab DXB **Tested by** : SC

Test Results [Classification of Surface Spread of Flame on Products]

Conditioning Temperature	23±2 °C	Relative Humidity	50±5%
Testing Room Temperature	24 °C	Thickness of Specimens	12.5mm
Test Method	BS 476 Part 7		

Purpose of Test

To determine the performance of the product when it is subjected to test in accordance with BS 476 Part 7: 1997, "Fire tests on building materials and structures - method of test to determine the classification of the surface spread of flame of products.

Scope

BS 476 Part 7: 1997 specifies a method of test for measuring the lateral spread of flame along the surface of a specimen of a product orientated in the vertical position under opposed flow conditions, and a classification system based on the rate and extent of the spread of flame. It provides data suitable for comparing the end-use performances of essentially flat materials, composites or assemblies, which are used primarily as the exposed surfaces of walls or ceilings (BS 476 Part 7: 1997 Clause 1.0)

Conditioning of specimens

Specimens were conditioned to constant mass at a temperature of 23±2°C and a relative humidity of 50±5% in accordance with BS 476: Part 7: 1997 Clause 5.5. A representative from the total number of sample was selected for constant mass verification.





Report No. : WL3- 3982/Rev-01
Date of Issue. : 13th October 2019
Date Revised. : 12th October 2020

TEST REPORT

Decorative Solid Surfacing Material

Wimpey Client : Modern Creative Enterprises LLC
Muscat, Sultanate of Oman
Sample Description : Decorative Solid Surfacing Material

Sample Information Provided by Client

Client Sample ID : Decorative Solid Surfacing Material
Source : Modern Creative Enterprises LLC
Brand Name : SOLID TOP
Sampled by : Client Date of Sampling : Not Given
Sample Submitted by : Client Sampling Cert. No : N/A

Laboratory Information

Wimpey Sample ID : C19-3982 Sample Matrix : Solid
Sample Received On : 25/09/2019 Date Tested : 02 -07 /10/2019
Test Location(S) : Wimpey Lab DXB Tested by : SP

Test Results

Tests	Test Methods	Results	Typical Values*
Density	BS 2782, Part 6 – Method 620 A	1.81 g/cc	1.8g/ml
Tensile Strength	BS 2782, Part 3 – Method 320 C	28.43 Mpa	25 MPa
Tensile Elongation	BS 2782, Part 3 – Method 320 C	1.28 %	0.26%
Young's Modulus	BS 2782, Part 3 – Method 320 C	11180 Mpa	10531 MPa
Hardness	BS 2782, Part 3 – Method 365 B	A/87/1 Shore D	86.4 Shore D
Abrasion Resistance	BS 2782, Part A9 – Method D	0.280 g/1000 cycle	2.100g/1000 Cycle
Flexural Strength	BS 2782, Part 3 – Method 335 A	53.1 N/mm ²	53 n/mm ²
Water Absorption	BS 2782, Part 4 – Method 430 A	0.06 %	0.0135g
Scratch Resistance	BS 3794, Method 14	4.9 N	3.5 N
Boiling Water Immersion Test	BS 3794, Method 7	0.54 % Mass Increase	Mass increase

Remarks: * Typical Values (Project Specification) provided by Client
Reason for revision: 'Brand Name' included as per Client's request

Authorized Signatory


Ullas Kumar.N
Laboratory Manager



This report shall only be reproduced in full. Approval of the testing laboratory is required for partial reproduction. The test results relate only to the samples tested @ time of analysis. Sample retained for 1 month unless otherwise requested

Page 1 of 1

WLR-CH-001 Issue 1

END



MUSCAT

Report No. : WL3- 3651 A/Rev-01
Date of Issue. : 9th July 2019
Date Revised : 12th October 2020

TEST REPORT

Wimpey Client : Modern Creative Enterprises LLC
Muscat, Sultanate of Oman

Sample Description : Decorative Solid Surfacing Material (White Color Base)

Sample Information Provided by Client

Client Sample ID : Decorative Solid Surfacing Material (White Color Base)
Brand Name : SOLID TOP
Source : Modern Creative Enterprises LLC
Sampled by : Client Date of Sampling : Not Given
Sample Submitted by : Client Sampling Cert. No : N/A

Laboratory Information

Wimpey Sample ID : C19-3651 Sample Matrix : Solid
Sample Received On : 03/07/2019 Sample Color : White base
Date Tested : 06/07/19 - 08/07/2019 Specimen Thickness : 11.5mm
Test Location(S) : Wimpey Laboratories MCT Tested by : MR/AA

Introduction

One sample of Decorative Solid Surfacing Material (White Color Base) having an average thickness 11.5mm was submitted to Wimpey Laboratories on 3rd July 2019 with a request to carry out the following tests.

- A. Cleanability/ Stain Resistance as per NEMA LD3
- B. Chemical/Stain Resistance as per ISO 19712-2 :2007 Method A

Tests were performed in accordance with relevant test methods, pursuant to NEMA LD3 & ISO 19712-2 :2007 Method A and the results obtained are tabulated in the following sections.

Report Summary

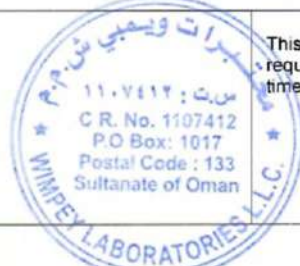
Description	Reference Standard	Results	Remarks
Cleanability	NEMA LD3	Rating : 5	Satisfactory : The staining agents have no effect. All marks from the staining agents removed with no impairment to the surface appearance other than a gloss due to cleaning.
Stain Resistance		Rating : 5	
Chemical/Stain Resistance	ISO 19712-2 :2007 Method A	Rating : 5	Satisfactory : No Visible changes observed

Comment : Detailed Report: WL3 – 3651 dated 9/07/2019

Reason for revision : 'Brand Name' included in the report as per Client's request.

Authorized Signatory

Ullas Kumar.N
Laboratory Manager



This report shall only be reproduced in full. Approval of the testing laboratory is required for partial reproduction. The test results relate only to the samples tested @ time of analysis. Sample retained for 1 month unless otherwise requested



MSDS & TDS

مشاريح الابداع العصرية ش.م.م
Modern Creative Enterprises L L C



TECH DATA

SOLID TOP- SOLID SURFACES

1. Manufacturer

MODERN CREATIVE ENTERPRISES LLC.
MA'BELLA SANAIYA 5
P.O. Box 89, P.C 100
SULTANATE OF OMAN.
Phone: (968) 24460333
Fax: (968) 24450442
Email: moderncreativellc@gmail.com

2. Product Descriptions

Recommended Uses

Solid Top Solid Surface sheets are recommended for interior decorative and functional applications where prestigious appearance, high stain resistance, ease of maintenance and extensive customizing capabilities are beneficial.

Recommended horizontal applications include tops for counters, tables, vanities and bars. Solid Surfacing may be customized to expand function through the addition of grooves and recesses to permit draining and to allow for storage of items such as soap bars or frequently used tools. Panels may also be used to create windowsills and store fixtures, as well as fine custom furniture. Vertical applications may include paneling for walls, elevators, tub and shower surrounds, and counter facades, partitions for toilets and dressing rooms, and interior signage.

Solid Surfacing is water-resistant and features inconspicuous seams and renewable surfaces. It can be coordinated with a variety of sinks, including Solid Top self-rimming and under mount solid surface sinks.

Solid Top is Class 1 (A) fire-rated, which further enhances their usefulness in high- end contract, commercial and institutional applications. See Section 3 for details.

Because of their chemical makeup, Solid Top Solid Surfaces are appropriate for many hospital surfaces. Panels may be bonded to each other with watertight seals.



TECH DATA

SOLID TOP- SOLID SURFACES

Product

Composition:

Solid Top is manufactured of Acrylic Modified ISO/NPG Polyester Resins, fire-retardant fillers and proprietary coloring agents. Solid Top Solid Surface products, including kitchen and bar sinks, and lavatory bowls all are homogeneous, with uniform color throughout their thickness. Solid Top sheets are distributed with one good face, which can be finished, and the back is sanded to facilitate bonding to the substrate.

Basic Limitations:

Solid Top sheet goods are designed for interior and exterior use. When specifying Solid Top Solid Surface for exterior applications, the design, fabrication and installation procedures must consider extreme concurrent temperature contrasts that could result in seam failure. Solid Top Solid Surface is not recommended for building facade and fascia applications.

Solid Top panels do not require bonding to substrates, and should not be bonded to solid wood, plaster, concrete, gypsum wallboard or other brands of solid surfaces. They do, however, require a supporting material or framework.

Solid Top sheet goods are meant for interior use, since they must be bonded to suitable substrates such as MDF or particleboard.

Finishes and Colors:

Solid Surface panels are supplied with a sanded matte surface. The final finish should be supplied by the fabricator and may range from matte to high gloss, depending on the customer's specification.

Solid Surface colors are produced to coordinate with solid color Solid Top that has coordinating letters & numbers. Custom colors are available with a minimum order. Please allow six to eight weeks for delivery.



TECH DATA
SOLID TOP- SOLID SURFACES

Sheet Dimensions

Solid Top Size	
Panel Widths:	740mm
Panel Lengths:	3500mm
Thickness:	12mm
Strips Width:	N/A
Strips Length:	N/A

***Available in limited**

colors.

NOTE: Sheets are approximately 3mm longer and wider than measurement given above. Minimum quantities may apply to certain sizes and thicknesses.

Solid Top Solid Surface kitchen and bar sinks and lavatory bowls are produced in colors that coordinate with Solid Top Solid Surface panels with the same names and numbers. Minimum quantities may apply

Modern Creative Enterprises L L C



TECH DATA

SOLID TOP- SOLID SURFACES

3. Technical Data

Physical Properties (typical values)

Property	Result	Test Method
Density	1.73x105kg/m3	ASTM D792-08
Tensile Strength	6,500psi	ASTMD-D638-10
Tensile Modulus	1.5x10'psi	ASTMD-D638-10
Tensile Elongations	0.5% min.	ASTMD-D638-10
Flexural Strength	10,000 psi	ASTMD-D790-10
Flexural Modulus	1.2x10°psi	ASTMD-D790-10
Hardness	65	ASTMD-D2583-07
Thermal Expansion	3.02x10 in./in.C°	ASTMD-D696-08
Water Absorption	0.10%	ASTM-D570-98
Light Resistance(Xenon	No effect	NEMA LD 3-2000 Method
Ball Impact Strength	Pass	ASTM D5420-10
Wear and Cleanability	Pass	ANSI-Z124.3&Z124.6
Stain Resistance	Pass	ANSI-Z124.3&Z124.6
Fungus and Bacteria	Does no support microbial	ASTM-G-21&G-22
Boiling Water Resistance	No effect	NEMA LD 3-2005 Method
High Temperature	No effect	NEMA LD 3-2005 Method
Toxicity	99(pure color) 66(patterned color)	Pittsburgh Protocol Test ("LC50"Test)
Flammability	All colors (Class B)	ASTME84-08
Flame Spread Index	<25	
Smoke Developed Index	<25	

**This is a repairable surface and all stains were removed in accordance with ANSI Z 124.3 modified cleaning methods.*

***Boiling water, high temperature resistance and Radiant Heat Tests may dull the surface; However, the surface is repairable and may be refurbished with Scotch-Brite pad and water.*

****Bonded to a ¾-inch thick, 45-lb density industrial grade particleboard.*

^Panels bonded to 5/8-inch thick fire-rated particleboard using Solid Top-recommended adhesives.

Panels tested unsupported.



TECH DATA

SOLID TOP- SOLID SURFACES

Fire Test Data – SOLID TOP- SOLID SURFACES

SOLID TOP is fire-rated to code compliance Class II per ASTM-E-84.

Codes and Certifications – SOLID TOP

Approved by NSF International in Class 51 for “Food Zone” areas.

FDA Compliance for food contact.

New York City Material Equipment Acceptance number 361-95-M

Fire Test Data SOLID TOP

Typical Flame Spread and Smoke Developed Properties: For SOLID TOP panels with a thickness of 12mm, Flame Spread is less than 25, Smoke Developed is less than 25.

Fire Rating Test Method: Test data for SOLID TOP Solid Surface panels are obtained by the American Society for Testing Materials (ASTM-E-84; Standard Test Method for Surface Burning Characteristics of Building Materials). This procedure is catalogued by Underwriters Laboratories, Inc. as UL 723.

Evaluation of SOLID TOP Solid Surface Mass Transit Specifications:

ASTM D2015-93a - Standard Test Method for Gross Calorific Value of Coal and Coke by
Adiabatic Bomb Calorimeter 4271
BTU/lb.

NFPA- 130 Classification: SOLID TOP confirms to the requirements for surface flame spread and smoke density.



TECH DATA

SOLID TOP- SOLID SURFACES

4.Maintenance

The decorative surfaces, sinks and bowls may be cleaned with warm water and mild soaps, such as those used for hands or dishes. Non-abrasive household cleaners (such as Fantastik and Formula 409) may also be used. Abrasive cleaners (such as Comet®, Soft Scrub®, Bon Ami®, etc.) should not be used on solid surface except for removing tough stains, minor scratches and burns.

If a stain develops on the surface, wipe it away with soap and water or glass cleaner. If a stain doesn't respond to soap and water, for a matte finish, apply an abrasive cleanser and buff with a Scotch-Brite® pad using a circular motion. The same technique can be used for cigarette burns, minor cuts and scratches. For a gloss finish, contact dealer or fabricator before attempting repairs.

Do not expose the surface to harsh chemicals, such as paint remover, turpentine, nail polish remover (acetone) or stove and drain cleansers. If these chemicals come in contact with the surface, immediately wash them off with water, using appropriate safety measures to avoid injury.

Always use a cutting board instead of cutting directly on the surface. While minor cuts and scratches can be repaired, care should be taken to prevent them and not mar the surface.

Hot pans and heat-producing appliances (frying pans, baking pans, electric skillets, crock-pots, coffee pots, etc.) must be placed on a trivet with legs.





APPROVALS

مشاريح الابداع العصرية ش.م.م
Modern Creative Enterprises L L C





Al Bahja Civil Construction Co.LLC

P.O.Box 364, POSTAL CODE : 111,SEEB

SULTANATE OF OMAN

TEL : 24592351/24592352/24592353

TELE FAX : 24590076

E-mail :bahjamct@omantel.net.om

TRANSMITTAL NOTE

To:

The Chief Engineer Royal Estate, Seeb

Fax No. 24415332

Royal Estate Affairs,

Date: 16.01.2017

P.O.Box 68,PC 111

Sultanate of Oman

Ref. : ABCC/B-45/17/1241

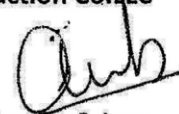
Project : SULTAN QABOOS MOSQUE AT BID BID (DPN/20/12)

The following Document are enclosed.

Sl. No.	No. of Copies	Reference	Description
1	1	MCE-STB-06	Solid Top - Counter

- For your approval / comment / action
- For your information / records
- Please acknowledge receipt
- As per your request

For Al Bahja Civil Construction Co.LLC


Thoams. C. Jose
Project Manager

REMARKS :

Approved

ABCC Form No.20439 C (R0)

[Signature]
18-01-2017



MATERIAL APPROVAL SHEET

PROJECT: BAIT AL BARAKAH- EXTENSION OF PRIVATE KITCHEN & OTHER MISCELLANEOUS WORKS (DPN/15/16)			
Package Ref: DPN/15/16	Contractor: AL Badi Trad.&Cont.EST		MAS No:CVL- 39
Material Description: Corian Countertops		BOQ Ref:4/17-B	
		DRG Ref:AR-07	
Location: For Kitchen Used		7.2 TOILET	Spec Ref:8.2.0-X
We confirm that the material hereby submitted is suitable for the conditions and conform with the contract specifications and all applicable codes; standards and statutory requirements. We confirm that no variation in the contract sum is implied or claimed by this submittal. Acceptance of this material submittal does not alter in any way whatsoever our contractual or common obligations and responsibilities. Where the submittal is in any way at variation with the specifications, such variations will be identified and brought to the attention of the contract administrator in this form.			Enclosure Drawings:N/A Samples: At Site Literature:N/A Other:Sample,Catalogue
MAIN CONTRACTOR SIGNATURE WITH DATE			
SPECIFIED		PROPOSED	
MFR/ AGENT	N/A	MFR/ AGENT	Modren Creative Enterprises
MAKE/ MODEL	N/A	MAKE/ MODEL	As Per Spec.
CAPACITY/ SIZE	N/A	CAPACITY/ SIZE	As Per Spec.
PLACE OF ORIGIN	N/A	PLACE OF ORIGIN	OMAN
NOTICE OF COST VARIATION		REASON FOR ALTERNATIVES	
nil			
Comments: 1> THICKNESS OF CORIAN TOP TO BE 12mm 2> PRODUCE THE SAMPLE MATCHING THE EXISTING			
Main Contractor:	Approving Authority	Contract Administrator (PC)	Approval reqd by:
	G.K		Delivery Duration:
Date Recd:	Date Recd.	Date Recd:	A - Approved
Review status	Status 'B'	Status	B- Approved with comments
Sign:	Sign: CB	Sign: B.P	C - Not Approved
Date: 17/01/2017	Date: 16.01.2016	Date: 17-01-2017	
Encl: (1) Compliance Statement (2) Respective BOQ pages (3) Respective specification pages (4) Respective IFC/working drawing part plans			

Huckle & Partners LLC

MATERIAL APPROVAL SUBMITTAL


PROJECT No.: **15006**

Chartered Architects and Planners
 P O Box 1378 RUW Post Code 112
 Sultanate of Oman
 Tel: 24801503 24801509 24801253
 Fax: 24896056 E-Mail: handp@omantel.net.om


PROJECT:
BRITISH SCHOOL MUSCAT, OMAN PHASE-1C

ISSUE DATE:
04.10.2016

CONTRACTOR: **TARGET L.L.C.**

MAS DESCRIPTION: VANITY COUNTER TOPS		MAS NUMBER: C-55
SPECIFICATION REF.: --		DRAWING REF.: WD-1C-025 Sh01-Sh05
BOQ REF.: BILL 4/25 Item B - F		NOTICE OF COST VARIATION: NIL
	AS SPECIFIED	AS PROPOSED
MANUFACTURER	--	MODERN CREATIVE ENTERPRISES LLC
SUPPLIER	--	MODERN CREATIVE ENTERPRISES LLC
CATALOGUE REF. NO.	PREFORMED VANITY COUNTER TOPS	SOLID TOPS – solid surface compose of Acrylic Modified ISO/NPG Polyester Resins, Fire retardant fillers and proprietary coloring agent.
SIZE/ CAPACITY/ OR DUTY	1990x600, 2150x600, 2700x600, 2735x600 & 2800x600mm wide, 12mm thick with 50mm backsplash & 100mm front fascia.	1990x600, 2150x600, 2700x600, 2735x600 & 2800x600mm wide, 12mm thick with 50mm backsplash & 100mm front fascia.
FINISH/COLOUR	DARK GRAY	AS PER GIVEN SAMPLE
ENCLOSURES/ ADDITIONAL INFORMATION		MATERIAL DATA SHEETS, SAMPLE BOARDS & PREVIOUS MAS APPROVAL

We confirm that the material hereby submitted is suitable for the conditions of use and conforms with the Contract Specifications and all applicable Codes, Standards and Statutory Requirements. We confirm that no variation in the Contract Sum is implied or claimed by this submittal sheet. Acceptance of this material submittal does not alter in any way whatsoever our contractual or common obligations and responsibilities.

Signed  as the authorised representative for the Contractor

Date **4/10/2016**

Accepted as complying with Contract

Accepted but with comments as noted below

Rejected as noted below, new submittal required

COMMENTS

Sign..... Date.....
 Sub-consultant

Sign  Date **25/10/16**
 Huckle and Partners

Sign..... Date.....
 authorised representative

for

* Submit Samples for Approvals ST-29, ST-36 & ST-54 (large format)
 * Size, shape & location as per approved shop drawings

CIVIL CONTRACTING CO. (CIVILCO) LLC.

Civil, Electrical, Mechanical, Landscaping
& Irrigation Contractors & Traders

C.R. No.: 1/02240/7



شركة المقاولات المدنية (سيفلكو) ش.م.م

مقاولون للأعمال المدنية والكهربائية والميكانيكية
واحصل التشجير والري والأحضان التجارية

من بت رقم : ١/٠٢٢٤٠/٧

Ref.: CIVILCO/J9025/0627/2014..... الانساره

Date: 27/08/2014..... التاريخ

M/s Modern Creative Enterprises LLC
PO Box: 89, Muscat, PC: 113
Sultanate of Oman
Tel: 24810373, 24815332, Fax: 24812258

Kind Attn: Mr. SM Baqir, Managing Director/ Mr. Reji (GSM: 96125315)

Dear Sir,

Project: JALAN BANI BU HASSAN HOSPITAL AT SOUTH SHAROIYA REGION

Subject: SUPPLY AND INSTALLATION OF SOLID TOP BENCHES

Further to the above materials supplied by you to the above project, you are requested to provide guarantee certificate as per MOH standard. Please note that the guarantee should be effective from 01st September 2014.

For your **URGENT** and **IMMEDIATE** action.

Thanking you for your best cooperation.

Yours truly,

For Civil Contracting Co. (CIVILCO) LLC

Rm. Vallappan
Operations Manager



CC: Director of Projects, Ministry of Health
Cc: M/s Asie Etudes Engg. Consultancy

ASIE I ETUDES Engineering
services.

P.O.Box : 1321, P.C. 112
Ruwi, Sultanate of Oman
Tel: 24590762. Fax : 24590541
e-mail : civilco@omantel.net.om
Web : www.civilco.com.om



ص.ب: ١٣٢١، الر.س الع.ب.د.ي : ١١٢
رو.ي، سلطنة عمان
هاتف: ٢٤٥٩٠٧٦٢ - ٢٤٥٩٠٥٤١ فاكس :
بريد الكترونس : civilco@omantel.net.om
الموقع الالكتروني : www.civilco.com.om



DTA/AG/CC/21

COMPLETION CERTIFICATE

Project : Supply Acrylic Sheet for Access Panel of the Toilets
Location : Sultan Qaboos University Hospital
Contractor : M/s. Modern Creative Enterprises LLC.
LPO No. : 2140853/ Indent No.2140012

This is to certify that M/s. Modern Creative Enterprises LLC. have supplied and completed the above works as on 30.10.2014. These material are under warranty for 10 years from the date of issue of completion certificate. The delay was due to the site was not ready from our side.

Adil Al Ghafri
Project Coordinator

For

Juma Said Al Jabri
Director of Technical Affairs

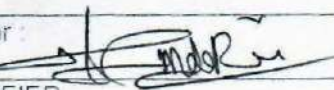
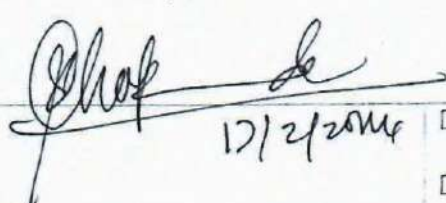
Date: 12th November 2014

Cc: Stores
Finance
File





MATERIAL APPROVAL SHEET

Project Ref. : DPN/04/12	Project : FOOTBALL GROUND & ATHLETIC TRACK FOR RGO, SEEB.	Contractor : EASTERN OVERSEAS LLC	Date : 26-01-2014
Material Description : MINERAL FILLED METHYL METHACRYLATE COUNTER TOP.		MAS Number : C-14	Drg. Ref. : AR-10 BOQ Ref. : 5/10-F Spec. Ref. :
Location to be used : WIP WASH ROOM'S.		Enclosure : Drawing : Sample : SAMPLE BOARD Literature : Other : Technical Data	
Signature of Contractor : 		Date : 26-01-2014	
SPECIFIED		PROPOSED	
MAKE / MODEL	MINERAL FILLED METHYL METHACRYLATE.	MAKE / MODEL	MINERAL FILLED METHYL METHACRYLATE.
CAPACITY / SIZE	12.3 MM.	CAPACITY / SIZE	12.3 MM.
MANUFACTURER	-	MANUFACTURER	MODERN CREATIVE ENTERPRISES LLC
LOCAL AGENT		LOCAL AGENT	- " -
PLACE OF ORIGIN		PLACE OF ORIGIN	OMAN.
NOTICE OF COST VARIATION :		REASON FOR ALTERNATIVES :	
<input type="checkbox"/> Accepted as complying with Contract <input checked="" type="checkbox"/> Accepted but with comments as noted below <input type="checkbox"/> Rejected as noted below, new submittal required			
COMMENTS : <u>ST-42</u> approved			
REMARKS / COMMENTS FROM ROYAL ESTATES		 Date received : Date forwarded :	
The approval of MAS does not relieve the contractor of his responsibility for errors.			



EOC/909/SC/22

19th February 2014

TO
Modern Creative Enterprises LLC,
PO. Box – 59, PC - 100
Muscat,
Sultanate of Oman,
Fax: 24 852 899

Attn : Mr. George,

Project : Football ground & Athletic Track for RGO at Mabella south, Seeb

Subject : Mineral filled methyl methacrylate counter top.

Please refer our LPO no. 13469 for the above mentioned 2 counter tops.

We attach herewith the MAS & shop drawings approval for your information and necessary action.

Please incorporate the comments mentioned in the shop drawing to increase the depth from 200 mm to 400 mm.

Please note, as per MAS approval ST – 42 ³ ₁₅ approved.

Please confirm the date of completion at site.

Thanking You
Yours faithfully
For EASTERN OVERSEAS LLC

PROJECT MANAGER
Encl –As Stated Above



Sultanate of Oman
Sultan Qaboos University
HOSPITAL
PURCHASE ORDER



سلطنة عُمان
مستشفى
جامعة السلطان قابوس
أمر شراء

MODERN CREATIVE ENTERPRISES LLC
WADI ALKABIR

No. : HMD/2141157 : الرقم
Date : 20/08/2014 : التاريخ
Budget No. : 21414864 : رقم الموازنة

34810373
Please supply the following items / Services in Accordance with your Contract/
Quotation / Tender 2140320.T/293/2014 Dated 16/04/2014

الرجاء تزويدنا بالمواد والخدمات المذكورة أدناه بناء على العقد المبرم معكم /
أسعاركم المقدمه/عطائكم رقم بتاريخ

الكمية المستلمة Quantity Received	رقم الالتزام	رقم الحساب / المشروع	المبلغ Amount		سعر الوحدة Unit Price		الكمية المطلوبة Quantity Ordered	الوحدة Unit	البيان Particulars	الرقم No.
			رو.ج RO.	ب.ج Bz.	رو.ج RO.	ب.ج Bz.				
	27100122043104		18,445.000		18,445.000		1	EA	HMD-MPW-0962 (1) SUPPLY & FIX CORIAN TOP FOR THE OPD RECEPTION TABLE ===== QUOTED DESCRIPTION: SUPPLY & FIX CORIAN TOP FOR THE OPD RECEPTION TABLE AS PER TENDER SPECIFICATIONS ===== Delivery : 120 Days MODERN CREATIVE ENTERPRISES/OMAN *** WARRANTY FOR TEN YEARS	1
			2,200.000		2,200.000		1	SQM	HMD-MPW-0965 (2) SUPPLY & INSTALL CORIAN IN GARDEN TABLE & SEATING BENCH ===== QUOTED DESCRIPTION: SUPPLY & INSTALL CORIAN IN GARDEN TABLE & SEATING BENCH AS PER TENDER SPECIFICATIONS ===== Delivery : 120 Days	2
TOTAL			20,645.000						الجملة	

Total (In Words) : Twenty Thousand Six Hundred Forty-Five Rials(S) And Zero Baise(S) Only

Guarantee Period :

Place and Date of Delivery : STORES : 120 Days

Other Comments :

ACCEPTANCE OF THIS ORDER CONSTITUTES ACCEPTANCE OF THE TERMS AND CONDITIONS SUBMITTED WITH THE TENDER DOCUMENT AND CONDITIONS OVERLEAF

Purchasing Officer : Date :

Commitment Clerk : Date :

Authorised official : Date :

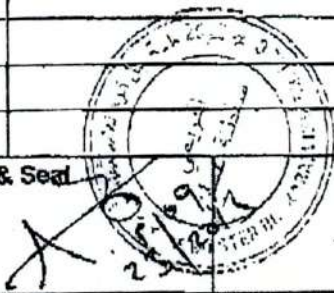
Please notify stores 2 days prior to the delivery. Tel.: 24141702

Distribution :

- 1 - White - Supplier 4 - Green - Record Copy
2 - Pink - Master File 5 - Yellow - Stores

التاريخ : 21/8/2014
التاريخ : 24/8/14
التاريخ :
الرجاء إخطار المحازن بمدة لاتقل عن يومان قبل التوريد على هاتف رقم : ٢٤١٤٧٠٢

- ١ - البيضاء - للمورد
٢ - الوردية - للملف الرئيسي
٣ - الزرقاء - تفتحه من الملف
٤ - الخضراء - للحفظ بالملف
٥ - الصفراء - للمحازن

MATERIAL APPROVAL REQUEST		
Submittal Ref.	CVL-MAR-92	Encl: technical submittal
Project Name	HEALTH CENTRE IBRI(MISKAN)	
Client	MINISTRY OF HEALTH	
Consultant	GULF ENGINEERING CONSULTANCY	
Contractor	MASTER BIN KARAM INV.CO.LLC	
Material Description	<u>solid top methyle methacrylate seating bench</u>	
Location to be used	AS PER DRAWINGS	
Proposed Manufacturer	MODERN CREATIVE ENTERPRISES LLC	
Local Supplier/Agent	MODERN CREATIVE ENTERPRISES LLC	
Drawing Reference		
BOQ Reference	3/27/B	
Specification reference		
Supplementary Information		
Financial Implication,if any		
Delivery Period & Effect If any		
Availability of Local Product		
Contractor's Signature & Seal		23/09/2013
		
Consultant's Observations	Client's Observation	
	<i>Submit sample (only DRAWING) for approval</i> <i>23/9</i>	
<input checked="" type="radio"/> Approved / <input type="radio"/> Approved as noted / <input type="radio"/> Not Approved		
Consultant's Observations	Client	

Above approval is general only. It will not relieve the contractor from the responsibilities otherwise mentioned in the contract

→ **LIST OF PROJECTS WILL BE
PROVIDED UPON REQUEST**

مشاريح الابداع العصرية ش.م.م
Modern Creative Enterprises L L C

