



MEP HOUSE

ELECTROMECHANICAL
ENGINEERING
SOLUTIONS.

RIYADH MUSCAT ABU-DHABI DOHA MANAMA KUWAIT.

KHARTOUM JUBA

1.	INTRODUCTION	03
2.	WHO WE ARE	04
3.	OUR VISION	05
4.	OUR SERVICES	06
5.	MECHANICAL SERVICES	07
6.	HVAC SYSTEM	08
7.	FIRE FIGHTING SYSTEM	10
8.	ELECTRICAL SERVICES	11
9.	POWER & LIGHTING SYSTEMS	12
10.	LOW CURRENT SYSTEMS	13
11.	PLUMBING SYSTEM	14
12.	RENEWABLE ENERGY SERVICES	16
13.	TESTING & COMMISSIONING	17
14.	OUR PROJECTS	18
15.	ORGANIZATION CHART	24
16.	EYE ON OUR TEAM	26



OVERVIEW

“Science can amuse and fascinate us all, but it is engineering that changes the world.”

Isaac Asimov

The purpose of this publication is to brief our prospective clients about our experience in Engineering Solutions for Electro-mechanical Services & Renewable Energy .

Our cumulative experience put us at the apex of successful implementation of projects. Also our manpower forces, which have been a major asset in our organization, coupled with our modern and professional engineering, have basically been our strength in execution of various projects.

We offer safety, quality, efficiency and prompt delivery services associated with the projects visions .



Developing Together



INTRODCTION

“Design is not just what it looks like & feels like .. Design is how it works .”

Steve Jobs

An Engineering Office established and incorporated in Two Countries Sudan & KSA in 2016 at the beginning then expanded to include Four more Countries Qatar, Oman , Emirates & Kuwait as MEP Services & Renewable Energy Engineering Solutions provider.

MEP HOUSE Co for Electromechanical Solution is a leading professional engineering firm and premier provider of Mechanical, Electrical, Plumbing, Renewable Energy and Fire protection engineering services.

We provide engineering services for both new and renovation projects in a broad range of applications including commercial, government, institutional and multi-family residential buildings & health care facilities.

Our Team handled high-volume projects and consistently delivered accurate, on-time services to the clients. We have a versatile team of HVAC ,Plumbing, Electrical & Firefighting engineers and draftsmen who specialize in design / Shop drawings and drafting services.

A wide range of expertise and depth of experience enables our team to complete even the most complicated projects with ease. We follow international standards and Codes relater to MEP systems.



WHO WE ARE

“The simplest things are often the truest.”

Richard Bach

In MEP House. Client service is our number one passion. We deliver expert mechanical, electrical and plumbing project solutions. We use the latest technology to stay on the cutting edge of sustainable design practices. You want a MEP partner who listens to you and who will work with you to achieve your vision?

Yes, you're in the right place.

We believe in Green future & sustainability vision, so, each of our designers and engineers is trained to recognize opportunities for and recommend Green Building Design Approaches wherever it's possible. We believe sustainable design equals good stewardship of our natural resources. We strive to exceed standards outlined by the US Green Building Council LEED and ASHRAE's Standard 90.1 Energy Standard for Buildings on every project.

We are committed to provide highest level of accuracy and precision in our projects within timeframe allotted by client without compromising with quality.



OUR VISION

“ Where there is no vision, there is no hope.”

George Washington Carver

We offer an array of MEP & Renewable energy engineering services, the unique service we offer is to help you decide & to achieve exactly what you need. We learn all we can about your project objectives, budget, timeline and return on investment expectations. Then, we focus our engineering expertise to provide the right solutions to meet those needs.

Mechanical Systems (HVAC)

Fire Protection



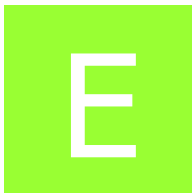
Lighting/Electrical Systems

Plumbing



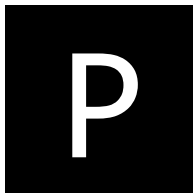
Mechanical

Systems Engineering
Services



Electrical

Systems Engineering
Services



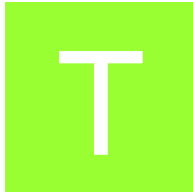
Plumbing

System Engineering
Services



Renewable

Energy solutions &
Engineering Services



Testing

& Commissioning
Services

OUR SERVICES

“ Quality is not an act, it is a habit ”

Aristotle

Whether you need to install Mechanical system for residential, commercial, industrial or health care facilities building you want to partner with mechanical engineers you trust. We are here for you.

MEP HOUSE Mechanical Engineers certified & expert Engineers with good of practice in the field. They stay informed and on top of the latest developments in the field through active participation in a variety of professional organizations including The American Society of Mechanical Engineers (ASME) , The American Society of Plumbing Engineers (ASPE) & The American Society of Heating, Refrigeration and Air-Conditioning Engineers (ASHRAE).

Our Mechanical services include :

- 1- HVAC systems.
- 2-Fire Fighting systems.
- 3-Special systems like medical gas , Liquid petroleum gas , Compressed air , ...etc.



MECHANICAL SERVICES

We are specialized in providing high quality, cost effective and prompt HVAC system design & shop drawings services. Our customer friendly approach and ability to offer timely and value-added services is what distinguishes us from others.

We provide our services based on international standards & Codes related to this application including but not limited to:

ASHRAE - American Society of Heating, Refrigerating & Air Conditioning Engineers.

BS - British Standards.

ARI - Air-conditioning and Refrigeration Institute.

AMCA - Air Movement and Control Association.

SMACNA - Sheet Metal and Air Conditioning Contractors National Association.

HVCA - Heating and Ventilation Contractors Association.



HVAC SYSTEMS

HVAC SYSTEMS :

Our HVAC engineering services include:

Cooling Load & Air Flow Calculations (Load Estimation / Calculation (Cooling & Heating) using manual forms or HAP 4.9, Elite, TRACE 700 Software).

System & Equipment's selection (Selecting of suitable HVAC systems based on calculation results including equipment's like AHU, FCU, ACCU, Water Cooled Condenser, Air Cooled Condenser, Cooling Tower, Chiller Packages, DX Chiller, Flooded Chiller, Refrigerant Coil, Water Coil, Package Units, Chilled Water Pumps with VFD, Ventilation Fans, Valves and other System Accessories).

HVAC Duct Calculations & Design (Specifying the material for ducts and their size according to SMACNA standards. Design and layout of accessories such as diffuser, dampers, grilles etc. Determining the register locations and types, acoustic calculations, ESP - pressure drop calculations (internal and external), duct lengths and connections required to produce layout given construction constraints).

Pipe sizing & Design including

- Calculating required water flow, pipe sizing by using McQuay software or any other sizing program, decides fittings locations and dielectric isolators where needed to design the piping system.
- Specifying piping material and criteria for pipe sizing. Layout of piping system.
- Hydraulic Calculation for Chilled Water Pump Selection, NPSH Calculations.

Ventilation Design & calculations:

- Ventilation & Infiltration by ACH or CRACK Method Std. ASHRAE 62.1, ASHRAE 90.1
- Car Parking Ventilation - Impulse & Induction.
- Kitchen Ventilation - Hood Designing.
- Toilet Ventilation - Commercial & Residential Building.
- ESP Calculations for Blower Fans.
- Exhaust Fans Selection - Performance Curve.
- Stair Well Pressurization System Designing.

We specialize in Fire Protection engineering services. We add value to our client's business by providing them the competitive edge of high quality fire protection system designs. The key to our success is our customer centric approach. The dedication and commitment of our team assists us better to meet your requirements, accuracy and on time delivery.

We provide our services based on updated editions of international standards & Codes related to this application including but not limited to:

NFPA - National Fire Protection Association Standards.

ANSI - American National Standards Institute.

Our Fire Fighting / Protection engineering services include:

Fire Fighting system Design, Calculations and Shop Drawing , including : (Fire Hose reel , Fire Hydrant , automated Sprinklers system, Fire Water pump set capacity , Firefighting Water tank capacity, Fire Dry & Wet pipe sizing , Hydraulic Calculations using Elite Software Fire Suppression Systems Designing) .



FIRE FIGHTING SYSTEMS

MEP HOUSE has comprehensive experience in electrical engineering that includes Power & Communications Backbone and Infrastructure design. We provide assistance with Interior & Exterior Lighting, Protective Services & Power Integrity . Our services include the development and production of design specifications, budget and tender analysis, and site supervision

We provide electrical systems engineering services based on updated editions of international standards & Codes related to this application including but not limited to:

IEEE - Institute of Electrical and Electronic Engineers ,IEC -Institute of Electrical and Electronic Engineers ,EIA/ - Electronic Industries Association ,TIA - Telecommunication Industries Association ,NFPA - National Fire Protection Association ,ISO - The International Standardization Organization ,NETA: International Electrical Testing Association , IEE: Institution of Electrical Engineers ,BS: British Standards ,IES Illuminating Engineering Society.

Our Electrical Systems Services Include :

- 1- Power System.
- 2- Lighting System.
- 3- Low Current Systems.



ELECTRICAL SYSTEMS

Lighting System:

Light Fixture Layout Designing involving Normal, Emergency, Critical and Life Safety.

Light Fixtures Identification as per the Standards and Occupancy sensors, dimmers etc., their selection, and placement at appropriate location.

Calculating the Lux levels for each classified areas together with lighting controls requirements for power savings

Worst-Case Egress Lighting Estimation. Lighting Distribution Panel design and designing Emergency Panel

Determining the Lighting Panel Location & details based on provided inputs

Power System:

Calculating the Loads for Electrical and Electronics equipment's Calculating the connected Load on each Circuits

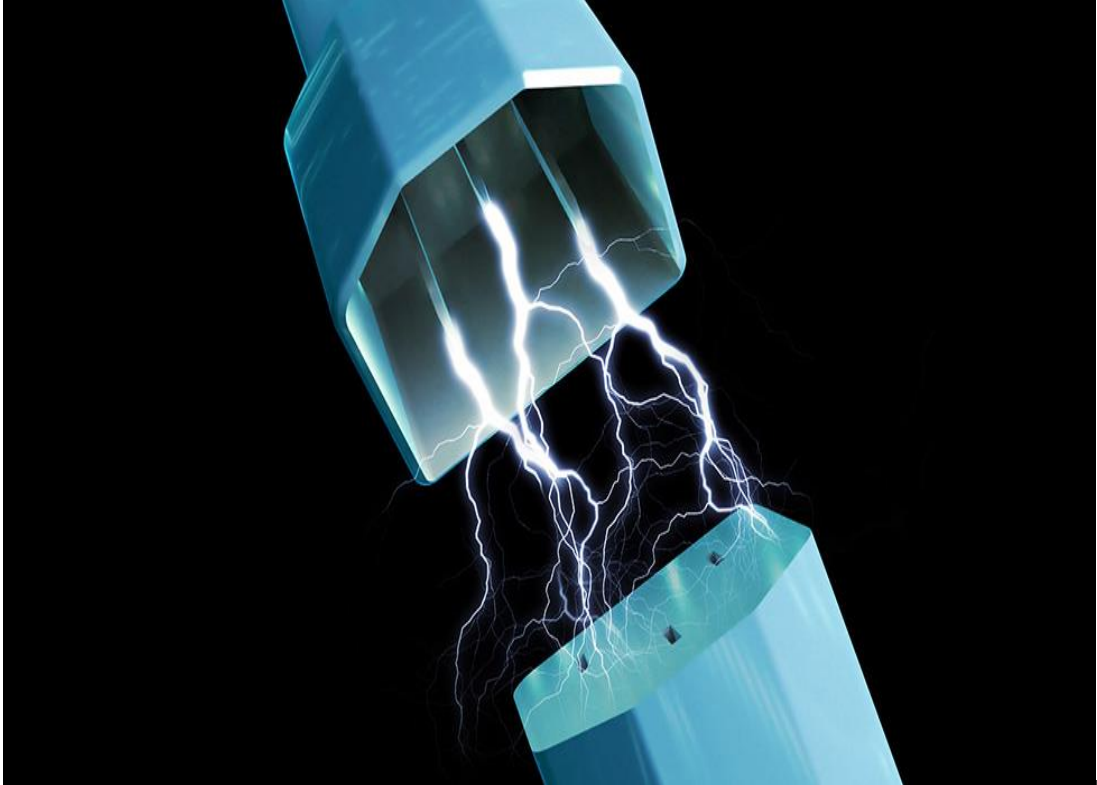
Lighting Distribution Panel design and designing Emergency Panel

Designing the Life safety and determining Earth Protection requirements.

Switchgear Sizing & Determining Transformer Size for Power Distribution.

Determining the cable and wire sizing.

Determining single line diagram for distribution system.



POWER & LIGHTING SYSTEMS

Our qualified and certified design engineers have an in-depth understanding of integrated LC design and engineering requirements from Concept Design, Design Development, RFQs & Tendering Documentation, Estimation & BOQs Development, Specifications Development, Detailed Design & Shop Drawings.

MEP HOUSE can provide all design packages for Safety & Security:

Fire Alarm Detection Systems.

Access Control and Biometric Systems (ACS).

Closed circuit television systems (CCTV)

Intrusion Detection systems (ID).

Public Address Evacuation Systems .

Nurse Call System

Smoke Management Systems

Parking Management Systems.



LOW CURRENT SYSTEMS

Building Management & Facilities Automation

Building Automation & HVAC Control System

Metering Solutions (Water,gas,electricity Energy)

Lighting Control System

Master Clock Systems

IT Networks & Communication Solutions

Structured Cabling System.

Telecom Infrastructure.

Wireless LANS.

IP Telephony and Voice Systems.

Audio / Video Automation

Audio & Video Systems.

SMATV , MATV ,IPTV Systems.

Home Theaters and Private Cinemas.

Public Announcement and BGM.



LOW CURRENT SYSTEMS

We provide plumbing system engineering services based on updated editions of international standards & Codes related to this application including but not limited to:

IPC - International Plumbing Code.

UPC - Uniform Plumbing Code.

ASPE - American society of Plumbing Engineers.

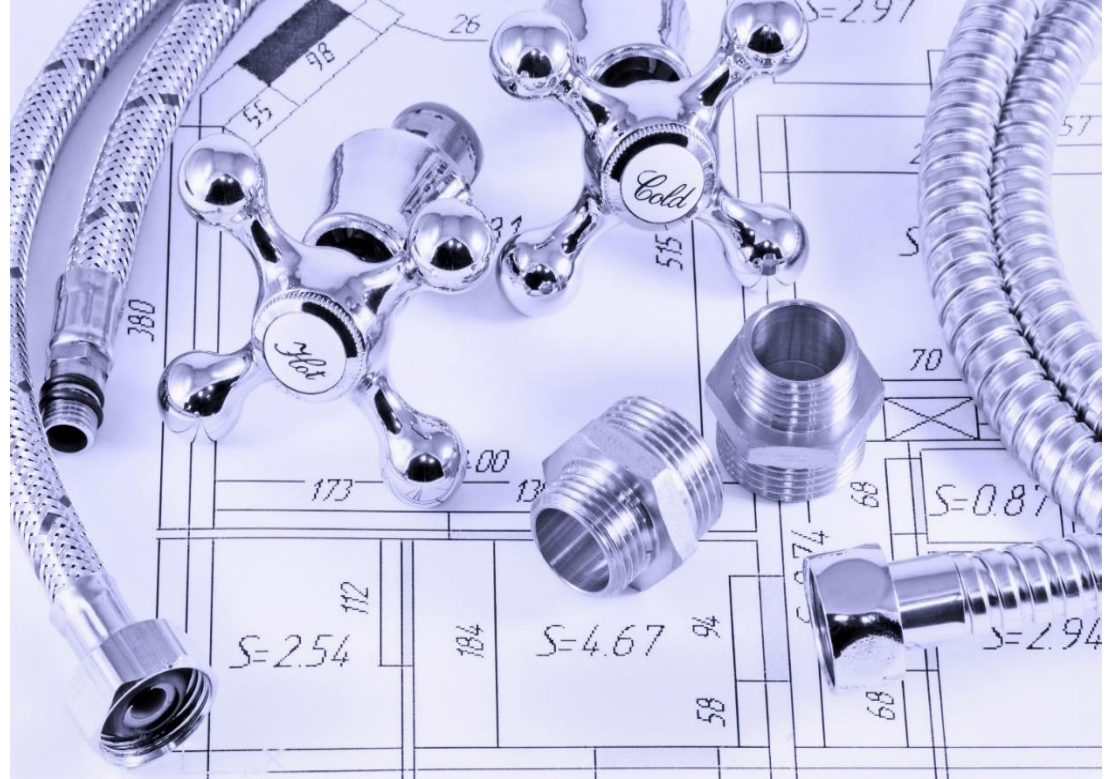
NSPC - National standard Plumbing Code.

Our Plumbing engineering services include:

A- Domestic Water System design, calculations & shop drawings, including:

Assigning water supply fixture unit to each plumbing fixture according to the usage and concerned codes. Converting fixture units to GPM.

- Estimating / Calculating of Total Storage, Consumable & total water demand for the Project.
- Sizing of all individual branches according to the flow requirement and friction loss.



PLUMBING SYSTEMS

PLUMBING SYSTEMS :

- Selecting and locating fittings like backflow preventer, water hammer arrestor, water pressure regulator etc.
- Estimating hot water demand, heater capacity selection.
- Determining the distance of remote fixture and minimum pressure required for it & checking the need of booster pumps for domestic water system.
- RO plants design.

B- Waste Water System design, calculations & shop drawings, including:

- Assigning Drainage fixture unit to each plumbing fixture according to your usage and concern codes.
- Sizing sanitary drainage/vent risers according to the number of fixture units to be carried.
- Determining if sump pumps or sewage ejector pumps are required.

- Sizing septic tank, soak away pits, dispersion trenches, oil & grease.
- Design of Sewage treatment plants.

C- Storm Water System design, calculations & shop drawings, including:

- Estimating roof area and Determining the riser and horizontal run size from rain water flow data and applicable code. Placing roof drains, leaders, main stacks.

OTHER PIPING SYSTEMS :

- Compressed air system design.
- Liquid Petroleum Gas (LPG) system design.
- Medical Gas system Design.

With our international partners, we offer solutions to clients who looking to do projects in the green and renewable energy fields. We offer services to commercial, residential & agricultural projects. Each site visit starts with a discussion of projects needs a walk though and a field measure. The renewable energy services also examine the interior and exterior, core-and shell environment to determine the impact on carbon emissions, noxious gases and water usage...

Our Renewable Energy Department technical and project management skills have been honed over decades of business development and project management in technology markets. In addition, our clients benefit from our comprehensive relationships and affiliations cultivated by our management team throughout the energy industry which supports various technologies.

Our team's capability to design, develop test & commission small, medium & large scale of renewable energy generation systems.



RENEWABLE ENERGY

Testing & commissioning is a quality process of checks and balances for ensuring building systems are designed, constructed, and operated for peak performance. The budget requirements of some projects will dictate that the owner can afford only basic functional testing. When this occurs it can have an impact on building performance during design or early construction.

With Our Partner in UAE (Unique Volt Company) & KSA (Team Arabia Company) we provide you a high level of commissioning management for MEP systems in your project. We help clients meet their short- and long-term goals for improved performance ,Our services include:

New building Testing & commissioning services:

- Design reviews of MEP construction drawings and specifications.
- Review of equipment and systems installation.
- Functional testing and system performance verification.
- Review operation and maintenance manuals.
- Existing buildings testing & Commissioning Service:
- Periodic Re-commissioning of MEP Systems.
- Preventive maintenance program for MEP systems.



TESTING & COMMISSIONING

In addition of added value in MEP systems Engineering , Design , Supervision or even executing stage through our Engineering team in many of projects during their carrier in Sudan , South of Sudan & Gulf area . MEP HOUSE provides wide range of MEP Engineering services science established till date .

Our MEP Engineering services covered , small , medium & large scale Projects . & touch many of MEP systems in number of projects applications like :

- Health Care Facilities . (Hospitals , clinics , clean rooms .. Etc.).
- Educational Facilities.
- Commercial Buildings .
- Residential Buildings
- Industrial Application.
- Infrastructure.

Following information's will give a tour on our projects , showing selective project that MEP HOUSE was a part of those projects successes story either through MEP staff during their Career or By MEP HOUSE as company.



OUR PROJECTS



Cultural

As MEP HOUSE we were grateful to handle MEP systems Design for BOSHER Mosque In Muscat Oman 2020.



Commercial

As MEP HOUSE we were grateful to handle MEP systems Design for ALFANDI Tower in Emirates Abu-Dhabi 2020.



Commercial

As MEP HOUSE we were grateful to handle MEP systems Design for Café de Rome in Muscat Oman 2019.



Industrial

As MEP HOUSE we were grateful to handle MEP systems Design for MASTEL Factory in Emirates Abu-Dhabi 2020.



Gulf



Industrial

As MEP HOUSE we were grateful to handle MEP systems Design for ADOS Warehouse in Emirates Abu-Dhabi 2019.



Industrial

As MEP HOUSE we were grateful to handle Electrical Design works for ALATEIA Carpentry in Doha Qatar 2019.



Cultural

As MEP HOUSE we were grateful to handle MEP systems Shop Drawings for NORA ALSALEEM Mosque in Makkah Saudi Arabia 2018.



Residential

As MEP HOUSE we were grateful to handle Mechanical systems Shop Drawings for DAR ALMOHANNADI in Doha Qatar 2019.



Residential

Under umbrella of the main consultancy office MEP HOUSE had the opportunity to provide MEP Design services For DAR ALOSAMA in Kuwait City Kuwait 2020.



Residential

Under umbrella of the main consultancy office MEP HOUSE had the opportunity to provide MEP Design services For NHC Villa in Riyadh Saudi Arabia 2020.



Commercial

Under umbrella of the main consultancy office MEP HOUSE had the opportunity to provide Design for BELADI Building in DUQM Oman 2019.



Laboratories

Under umbrella of Medical Contractor MEPHOUSE handled the role of MEP Shop Drawings Works in SFDA Laboratories in Riyadh Saudi Arabia in 2020.



Gulf



Commercial

Under umbrella of the main Contractor office MEP HOUSE had the opportunity to provide MEP Shop Drawings For BIN OMRAN Building in Doha Qatar 2019.



Commercial

Under umbrella of the main consultancy office MEP HOUSE had the opportunity to provide Electrical Design services For RAZA Offices in Riyadh Saudi Arabia 2019.



Commercial

Under umbrella of the main Contractor office MEP HOUSE had the opportunity to provide MEP Shop drawings For O Cafe in Riyadh Saudi Arabia 2019.



Food & Beverages

Under umbrella of the main consultancy office MEP HOUSE had the opportunity to provide MEP Design services For FALAFEL Central Kitchen in Riyadh Saudi Arabia 2020.



مجموعۃ الفيحاء

Health Care Facilities

Under umbrella of Main Contractor MEP HOUSE handled the role of Electrical Design Works in ALHASA Hospital in Saudi Arabia 2020.



Mall & Show rooms

Under umbrella of Main Consultancy office MEP HOUSE handled the role of MEP Design Works in ADLIYA FURNISHING Mall in Manama Bahrain 2020.



Cultural

Under umbrella of Main Contractor MEP HOUSE handled the role of MEP Design Works in ELM innovation Center in Riyadh Saudi Arabia 2020.



Hospitality

Under umbrella of BOUDLE Group MEP HOUSE handled the role of all MEP Design Works in NARCISS OLYA 5 Star Hotel in Riyadh Saudi Arabia 2020.



Gulf



Governmental

Under umbrella of Main Contractor MEP HOUSE handled the role of all MEP Shop Drawings Works in PUBLIC PROSECUTION Building in Khasab Oman 2019.



Entertainment

Under umbrella of Ministry of Youth and Sports MEP HOUSE handled the role of Mechanical Design Works in MADHA SPORT HALL in Oman 2019.



Industrial

Under umbrella of Main Consultancy office MEP HOUSE handled the role of Mechanical Design Works in DATES PACKING Factory in Doha Qatar 2020.



Cultural

Under umbrella of Main Contractor MEP HOUSE handled the role of all MEP Shop drawings Works in ARAB CENTER FOR RESEARCH in Doha Qatar 2019.



Residential

Under umbrella of Main Contractor MEP HOUSE handled the role of hvac system shop drawings in DAR ALBADI in Doha Qatar 2019.



Residential

Under umbrella of Main Consultancy office MEP HOUSE handled the role of all MEP Design systems in DAR ALOTHMANY in Riyadh Saudi Arabia 2018.



Residential Compound

Under umbrella of Main Consultancy office MEP HOUSE handled the role of MEP Design Works in SALALAH Residential Compound in Salalah Oman 2019.



Educational

Under umbrella of Main Consultancy office MEP HOUSE handled the role of Electrical systems Design in ALYASMIN School in Riyadh Saudi Arabia 2020.



Gulf



مجموعة الجريسي
JERAISY GROUP

Residential

Under umbrella of Main Consultancy office MEP HOUSE handled the role of hvac system Design in M. ELJERASY Villa in Riyadh Saudi Arabia 2020.



Residential

Under umbrella of Main Consultancy office MEP HOUSE handled the role of all MEP Design systems in DAR A.ELAYADI in Riyadh Saudi Arabia 2020.



Hospitality

Under umbrella of Main Contractor MEP HOUSE handled the role of MEP systems Design in ALFADA 3 Stars Hotel in Riyadh Saudi Arabia 2020.



سَلْطَنَةُ عَمَانَ
وَزَارَةُ الْأَعْمَارِ وَالشُّبُونِ وَالرِّيَاسَةِ

Cultural

Under umbrella of Main Consultancy office MEP HOUSE handled the role of MEP Design Works in ALKHOOD Mosque in Muscat Oman 2019.



Health Care Facilities

Through part of our team members we had the honor to participate in design , executing , testing & commissioning stage of Breast Care Center of Khartoum during 2006-2007 .



Residential & Show rooms

As MEP HOUSE we were grateful to handle MEP systems consulting & supervision services & in Mr.Ahmed Amin Abdullatif (CTC group Chief of Executive) residence in 2017 & design of LG Flagship showrooms 2019.



Restaurant & Laboratory

Under umbrella of the main consultancy office MEP HOUSE had the opportunity to provide Design & Supervision services in Renovation of Ozone one project in 2017. in addition of Technical Support in KAFORI Residence 2017.



Pharmaceutical Factory

Under umbrella of main consultancy office MEP HOUSE handled the role of supervisor of all MEP Works in KAMBAL Pharmaceutical Factory in Khartoum in 2018.



Commercial Buildings

In corporate with project main designer , MEP HOUSE had the honor to provide full MEP design services for Oil Energy Tower (New Head Quarter) in Khartoum in 2018.



Presidential Guest House

As technical support for the main contractor in his scope of MEP services , MEP HOUSE was very happy to participate in Presidential Guest House complex in Khartoum during 2016-2018.



Banks Branches

MEP HOUSE had the opportunity to provide MEP systems shop drawings for Al-Matar Street Branch in 2016. also as part of our team was involved in Executing of Rotana Branch in 2008.



Administration Building

Under umbrella of the main consultancy office MEP HOUSE had the opportunity to provide Design & Supervision services in Renovation of Administration Areas n 2011. in addition of technical support to MTN Contractors in 2018.



Administration Building

Under umbrella of the main consultancy office MEP HOUSE had the opportunity to provide MEP Design services for SUDANESE CONTRACTORS ASSOCIATION in Khartoum 2018.



Offices

Under umbrella of the main consultancy office MEP HOUSE had the opportunity to provide MEP Supervision services in INTERPOL office in Khartoum 2019.



Commercial

Under umbrella of the main consultancy office MEP HOUSE had the opportunity to provide MEP Design services in Three Branches for EDB in Khartoum 2018-2019.



Industrial

Under umbrella of ALTEITAL group MEP HOUSE handled the role of MEP Design in AGP Factory in Khartoum in 2019.



Sudan



Camp

Under umbrella of the main consultancy office MEP HOUSE had the opportunity to provide MEP Design services in SIPET Camp in SUDAN 2018.



Office

Under umbrella of the main consultancy office MEP HOUSE had the opportunity to provide MEP Design services in DELTAPACK Factory offices in Khartoum 2018.



Cultural

Under umbrella of the main consultancy office MEP HOUSE had the opportunity to provide MEP Design services in ELNEFEIDI Mosque in Khartoum 2019.



Administration Building

Under umbrella of the Client MEP HOUSE had the opportunity to provide Design Review services for low current systems for SUDAN ENGINEERING COUNCIL Administration Building Khartoum in 2019.



Banks

Through part of our team members we had the honor to participate in design & Supervision stage on MEP system in many of Buildings & Branches belong to Khartoum Bank during 2008 - 2012.



Residential Compounds

As MEP HOUSE we were grateful to handle MEP systems Design , consulting & supervision services in Darfur Residential Compounds , in association group with Main project consultant & PMO in 2018 .



Educational Hall

Under umbrella of the main consultancy office MEP HOUSE had the opportunity to provide Design services in AL-AHFAD University for Women . In 2018.



Technical Schools

Under umbrella of GIZ (German Cooperation) MEP HOUSE handled the role of Design , Cost Estimation & Supervision of related items in Darfur Technical Schools in 2018.



Sudan



Commercial Buildings

Through part of our team members we had the honor to participate in design , executing , testing & commissioning stage of ACOLID Commercial Building in Khartoum during 2009-2010 .



Health Care Facilities

Under umbrella of the main Design office MEP HOUSE had the honor to provide Full MEP Design services for eleven different hospitals in Sudan in 2017-2019.



Industrial Applications

Through part of our team members we had the honor to participate in design & operation stage on MEP system in PEPSI Factory during 2005 - 2007.



Administration Building

Under umbrella of the main consultancy office MEP HOUSE had the opportunity to provide Design services for Main administration building of African Development Bank in Khartoum in 2017.



Hospital

As MEP HOUSE we were grateful to handle MEP systems Supervision services For KASALA HOSPITAL in SUDAN 2020



Facilities Management

As MEP HOUSE Team Members we were grateful to handle MEP systems Repair in ZAIN Buildings SUDAN 2020.



Banks

Under umbrella of the main Designer office ISKAN / MEP HOUSE had the opportunity to provide MEP Systems Report For ALKHALEEJ BANK HQ Design Competition in Khartoum 2020.



Industrial

As MEP HOUSE we were grateful to handle MEP systems Design services in SAMIL under umbrella of the Client in 2020



Sudan



Residential

As MEP HOUSE we were grateful to handle MEP systems Design services in BS VILLA under umbrella of Designer in OMAN 2020



Residential

As MEP HOUSE we were grateful to handle MEP systems Design services in CVT Villa under umbrella of Designer in SAUDI ARABIA 2020



Residential

As MEP HOUSE we were grateful to handle MEP systems Design services in V19990 MODEL under umbrella of Designer in SAUDI ARABIA 2020



Residential

As MEP HOUSE we were grateful to handle MEP systems Design services in R&C BUILDING under umbrella of Designer in OMAN 2020



KSA



Data Centre

Through part of our team members we had the honor to participate in Design & Supervision stage on MEP systems in SUDATEL Data Center in khartoum under umbrella of the main consultant during 2009-2010.



Residential Compounds

As MEP HOUSE Team Members we were grateful to handle MEP systems Design in UNAMID Residential compounds in three states in Sudan under umbrella of the main Contractor during 2010.



Banks

Under umbrella of the main Contractor office MEP HOUSE had the opportunity to provide MEP Systems Shop Drawings services for OMDURMAN NATIONAL BANK Obaid khatim Branch Khartoum 2017.



Offices

As MEP HOUSE we were grateful to handle MEP systems Design services in VISION VALLY HQ under umbrella of the main consultant during 2018



Farms

Under umbrella of the main Consultant office MEP HOUSE had the opportunity to provide Electrical Systems Design services for WADINA Farm Khartoum 2019.



Banks

As MEP HOUSE we were grateful to handle MEP systems consulting & supervision services in Riyadh & Baladeya Branches under umbrella of the main consultant during 2018.



Markets

As MEP HOUSE we were grateful to handle MEP systems Design services in ALHOUSH Khartoum Amarat under umbrella of the main consultant during 2020.



Banks

Under umbrella of the main Contractor office MEP HOUSE had the opportunity to provide MEP Systems Shop Drawings services for SUDANESE FRENCH BANK Garden city Branch Khartoum 2017.



Educational

Through part of our team members we had the honor to participate in design & Supervision stage on MEP system in BRITISH COUNCIL in Khartoum during 2011 - 2012.



Bank Branches

As MEP HOUSE we were grateful to handle MEP systems Design , services in all Shimal Bank Branches under umbrella of the main consultant during 2018.



Offices

Through part of our team members we had the honor to participate in design Management MEP system in WFP Building in Khartoum 2011 - 2012.



Hotel

Our team members were involved in Design , Executing , Testing & Commissioning stage of Expert & Trainees Building in Khartoum during 2007-2009.



Sudan



Universities

Through part of our team members we had the honor to participate in design , executing , testing & commissioning stage of many universities & colleges around the Kingdom during 2012-2015.



Restaurant & VIP Halls

Under umbrella of the main Contractor our staff member were involved in the project of renovation of Saudi television Ball (Restaurant & VIP hall) in Riyadh during 2014.



Hotel

Through part of our team members we had the honor to participate in Design & Supervision for Al-masfala Hotel located in holy Makkah in 2014.



Offices

Through part of our team members we had the honor to participate in Supervision of Public Pension Agency in Three States in Saudi Arabia 2014.



KSA



Restaurant

Through part of our team members we had the honor to participate in design & supervision for the main branch of McDonalds in Riyadh in 2014.



Health Care Facilities

Through part of our team members we had the honor to participate in Design , Executing , Testing & Commissioning stage of many of 100 , 200 , 1000 Beds hospitals around the kingdom during 2012-2016.



Hotel

Our team members were involved in Executing , Testing & Commissioning stage of New Hilton Riyadh Hotel During 2013 - 2015.



Buildings

Through part of our team members we had the honor to participate in Electrical Design with main consultant in different buildings types located in Saudi Arabia 2016.



KSA



Cultural Centre

Under umbrella of the main consultancy office MEP HOUSE had the opportunity to provide Design service for three mosques in Jeddah in 2018.



Showroom

Under umbrella of the main Contractor office MEP HOUSE had the opportunity to provide full Technical support for one of the biggest Nissan PETROMIN Showroom & Maintenance Center in Dammam in 2016.



Bank

Through part of our team members we had the honor to participate in supervision stage of SAAB bank head Quarter located in Riyadh in 2018.



Data Centre

Through part of our team members we had the honor to participate in Testing & Commissioning stage regard one of Mobily data Centers located in Riyadh in 2016.



BAHRAIN

رافال
RAFAL

شركة رافال للتطوير العقاري
RAFAL Real Estate Development Co.

Residential Complex

Through part of our team members we had the honor to participate in supervision stage of Marvella Residential complex in 2014-2016 .



Offices

Through part of our team members we had the honor to participate in design & supervision stage of Different Offices Premises around the Kingdom During 2015-2018 .

مصرف الراجحي
Al Rajhi Bank

Bank

Through part of our team members we had the honor to participate in Design & Supervision of Electrical systems in AL-Rajhi Head Quarter Building in Riyadh during 2013 - 2017.

الزهراني القابضة
AL ZÄHRANĪ HOLDING

Residential Complex

Through part of our team members we had the honor to participate in supervision stage of ALZÄHRANĪ Residential complex in 2015-2016 .



KSA



مجموعة الباطين
ALBABBAIN GROUP

Commercial Facilities

Through part of our team members we had the honor to participate in supervision stage of central Commercial Compound 2014-2015 .



Industrial Facilities

Through part of our team members we had the honor to participate in Contracting for cold store 2013.



Administration Buildings

Through part of our team members we had the honor to participate in supervision stage of Commercial Compound 2014.



Mall & Hotel Complex

Through part of our team members we had the honor to participate in Supervision stage of Classic Tower in 2014.



Special Projects

Through part of our team members we had the honor to participate in design review & supervision stage of DUBAI Mall in Dubai during 2004-2007 .



Special Projects

Through part of our team members we had the honor to participate in design review & supervision stage of Burj Khalifa Tower in Dubai during 2004-2007.



Dubai Municipality

Through part of our team members we had the honor to work in Dubai Municipality buildings Department as Senior Mechanical Engineer. During 2001-2007.



Special Projects

Through part of our team members we had the honor to participate in Engineering , executing , testing & commissioning stage of Dubai Customs in Dubai during 2015-2017.



UAE



Industrial Application

Through part of our team members we had the honor to participate in Engineering , executing , testing & commissioning stage of Qatar Germany Factory in Doha during 2015.



Educational Facilities

Through part of our team members we had the honor to participate in Engineering , executing , testing & commissioning stage of Supreme Council Education in Doha during 2008-2011.



Offices

Through part of our team members we had the honor to participate in Engineering , executing , testing & commissioning stage of WOQOD in Doha during 2013-2015.



Residential Compounds

Through part of our team members we had the honor to participate in Engineering , executing , testing & commissioning stage of Integrated Workers Accommodation in Doha during 2015-2019.



QATAR



Industrial Facilities

Through part of our team members we had the honor to participate in Execution of Different buildings in Kuwait during 2017-2019.



Commercial Buildings

Through part of our team members we had the honor to participate in Execution of the Commercial Buildings in Kuwait during 2016-2017.



Special Projects

Through part of our team members we had the honor to participate in supervision stage of Different Buildings the Kuwait 2014-2016.



Commercial Buildings

Through part of our team members we had the honor to participate in Execution of the Avenues in Kuwait during 2016-2017.



KUWAIT



Health Care Facilities

Through part of our team members we had the honor to participate in design & supervision stage of central hospital of Khasab Island in 2008-2009 .



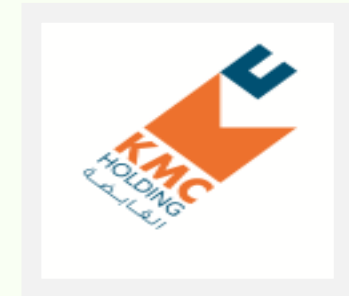
Educational Facilities

Through part of our team members we had the honor to participate in design & supervision stage of College of Law in Sultan Qaboos University in Muscat during 2008-2009 .



Administration Buildings

Through part of our team members we had the honor to participate in design & stage of Mazoon Electricity Company offices in Muscat , Salalah & Suhar during - 2009.



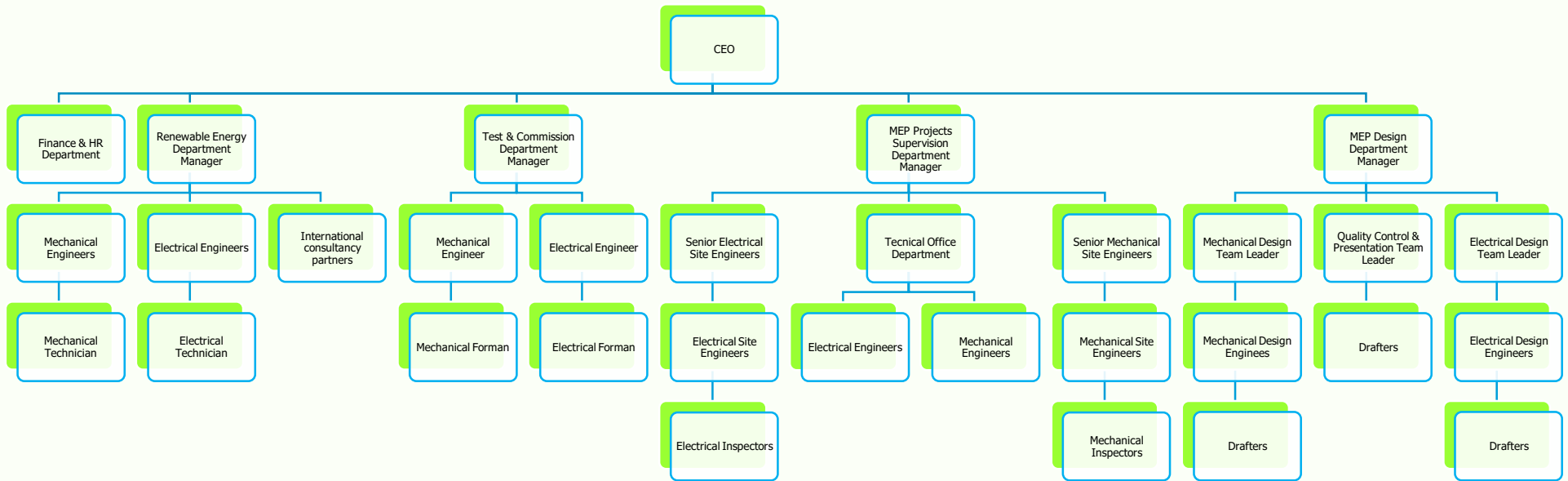
Mall & Hotel Complex

Through part of our team members we had the honor to participate in design & supervision stage of Al-muthanna Complex in Muscat during 2008-2010

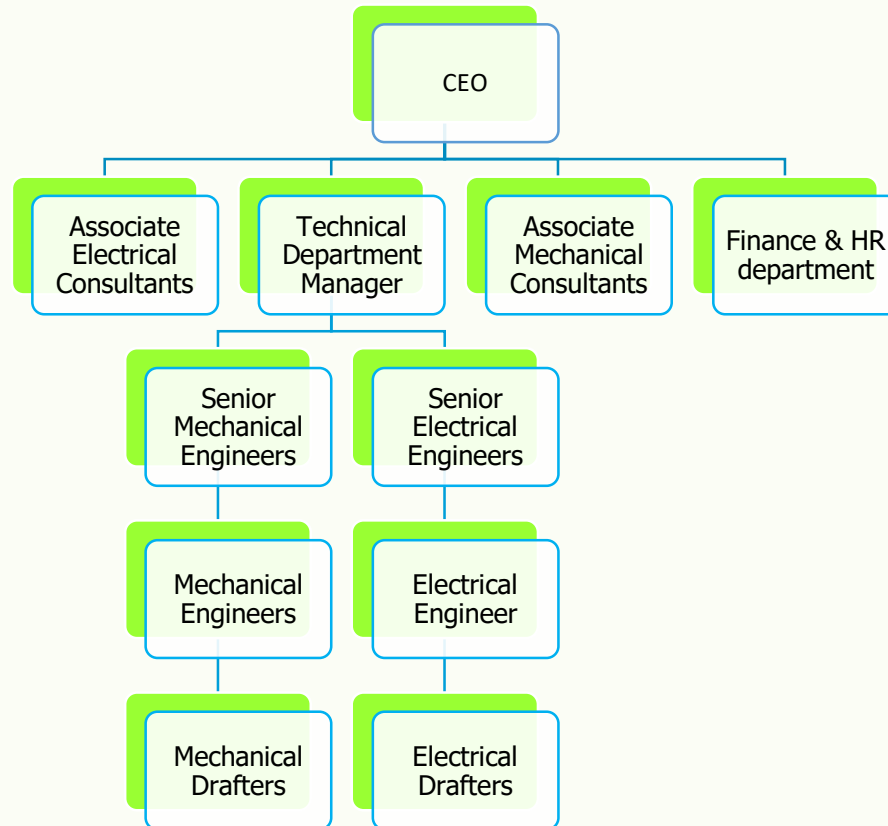


OMAN

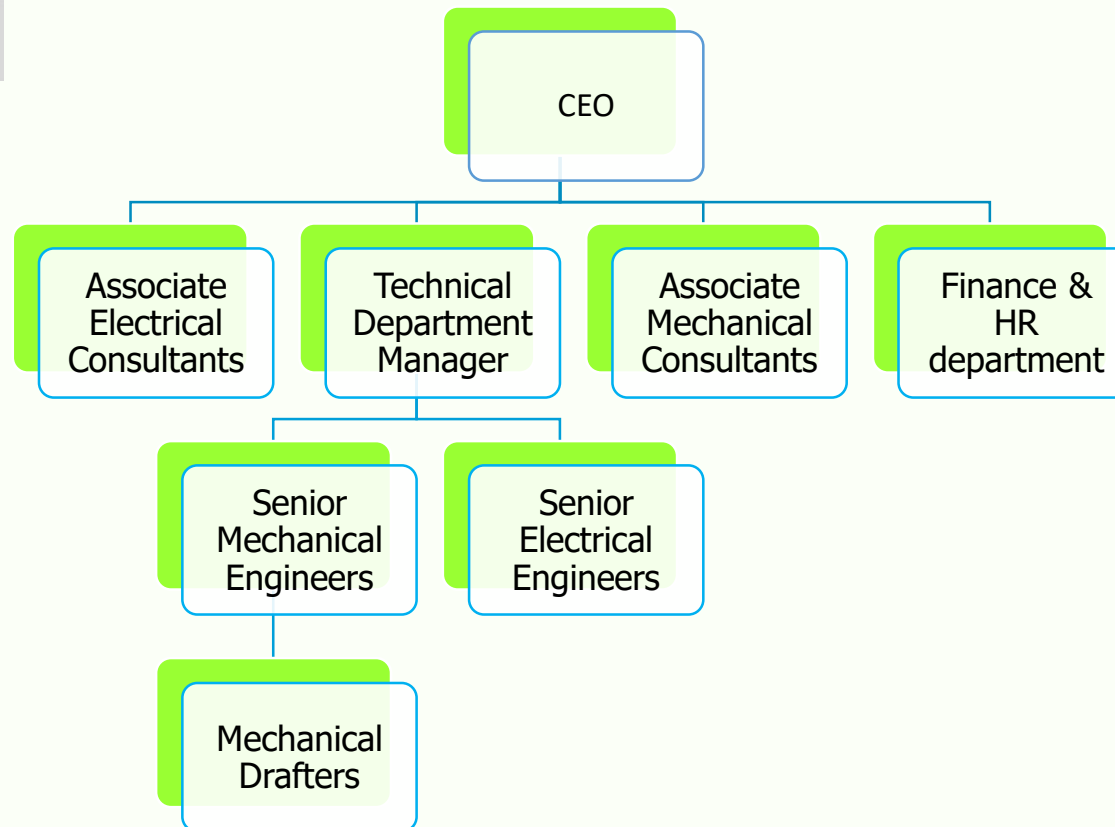
Organization Chart - Sudan Office.



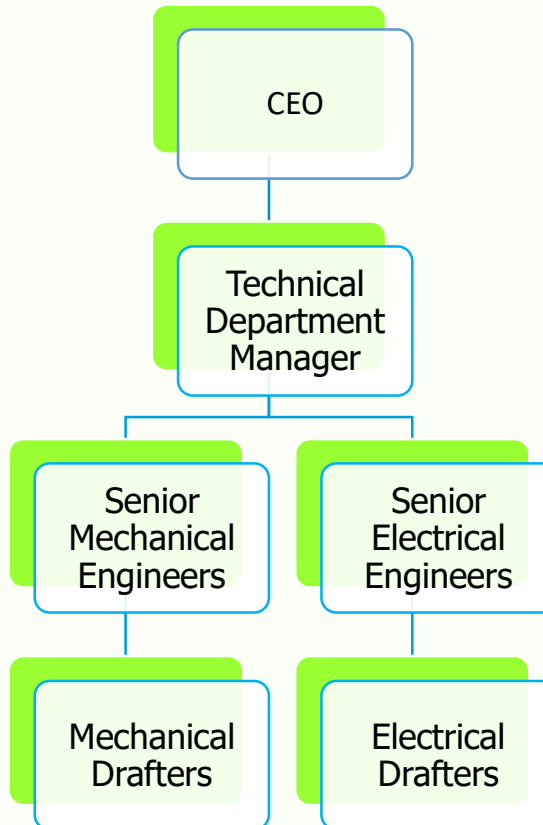
Organization Chart - KSA & Bahrain Office.



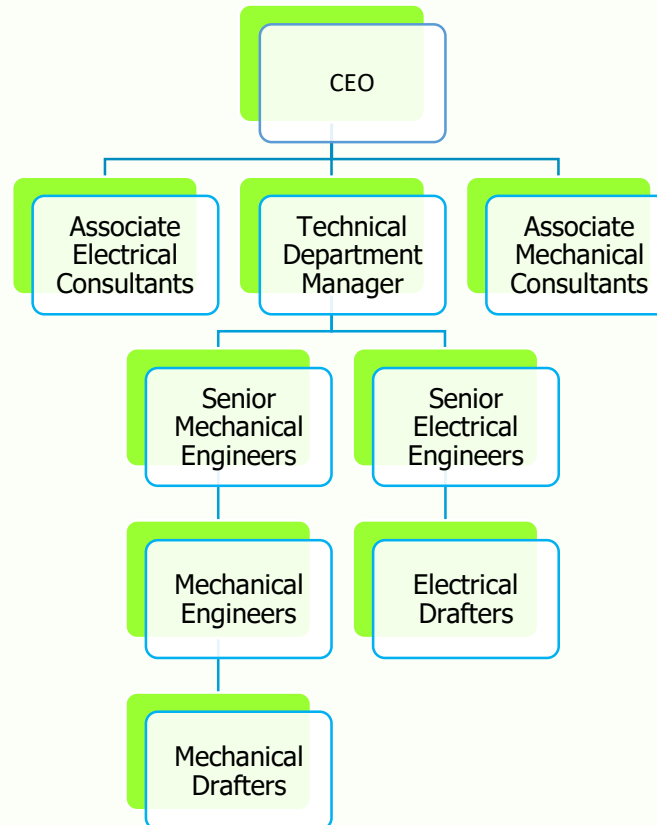
Organization Chart Oman Office.



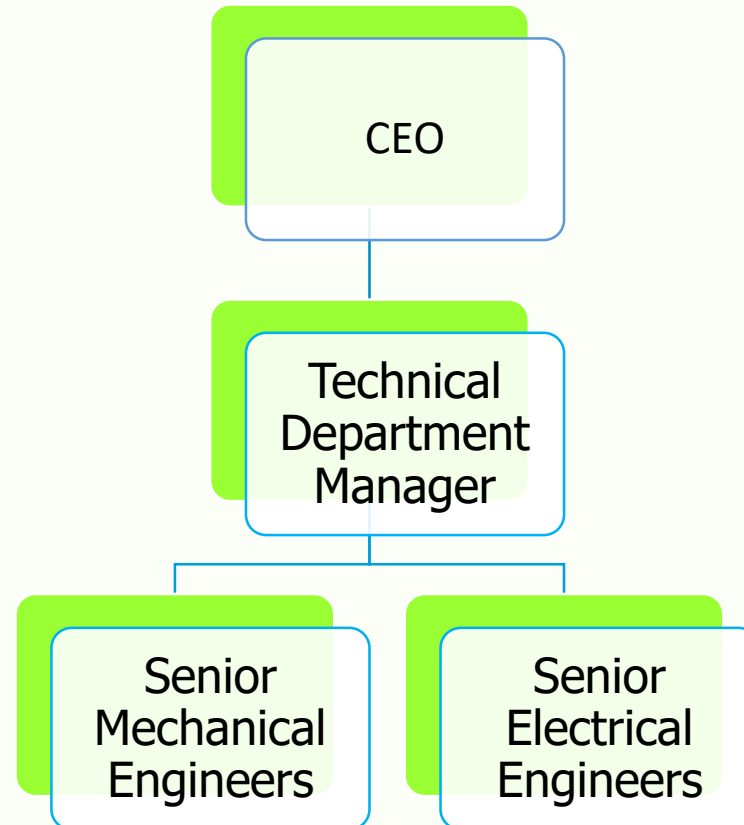
Organization Chart Qatar Office.



Organization Chart Emirates Office.



Organization Chart Kuwait Office.



Eye On Our Team



Eng. Ahmed Ibrahim El-Shafie.

KSA Office Coordinator.
Chief Executive Officer Bahrain.

Ahmed is one of MEP House founders, He's Expert Electrical Engineer with 13 years' experience in design, executing, and cost estimating, planning & managing of MEP systems (Building Services). related to construction field More than 4 years of them in GCC.

A Sudan University for science and technology graduate familiar with all standards, software's & tools that used in designing or executing of Electrical items in construction field. He attended many courses related to MEP Field such as Lighting systems Design Course (India), Power systems Design Course (India), Low Current Systems Design Course (India), Advanced Lighting Systems Design Course (India), Advanced Power Systems Design Course (Saudi Arabia) and Advanced Low Current Systems Design Course (Saudi Arabia).



Ahmed is member of many international Associations & councils like:

- Sudanese Engineers Council.
- Saudi Engineers Council.

He gained his 13 experience throw working as junior, Senior Electrical Engineer in many of MEP Contracting & Consultancy Firms like:

- CONCOR ELECTRO-MECHANICAL Co. - UAE /SUDAN.
- NEWTECH CONSULTING GROUP - SUDAN.
- ASAS FOR ELECTROMECHANICAL CO -KSA
- ABDULELAH ALMOHANNA - KSA.
- NAGA ARCHITECTS - KSA.

Eye On Our Team



Eng. Mo Babekir
Osman.

Chief Executive Officer–
Sudan Office .

Mohamed is one of MEP House founders, He's Expert Mechanical Engineer with 13 years' experience in design, executing, and cost estimating, planning & managing of MEP systems (Building Services). related to construction field More than 6 years of them in GCC.

A Khartoum University graduate familiar with all standards, software's & tools that used in designing or executing of Mechanical items in construction field. He attended many courses related to MEP Field such as HVAC , Fire Protection & Plumbing Design (India), Revit MEP (KSA), project Management Professional (Sudan) & LEED Green Associated (Sudan).

Mohamed is member of many international Associations & councils like:



- American Society of Heating, Refrigerating & Air Conditioning Engineers (ASHRAE).
- National Fire Protection Association (NFPA).
- Sudanese Engineers Council.
- Saudi Engineers Council.

He gained his 13 experience throw working as junior, Senior Mechanical Engineer , Projects & Technical manager in many of MEP Contracting & Consultancy Firms like:

- CONCOR ELECTRO-MECHANICAL Co. - UAE / SUDAN.
- CONCRETE ENGINEERING Co- SUDAN.
- TECHNICAL CONSULTANCY BUREAU - OMAN.
- 365 FOR ELECTROMECHANICAL Co - KSA.
- ASAS FOR ELECTROMECHANICAL Co. - KSA.

Eye On Our Team



Eng. Ehab Ahmed
Mahmoud.

Technical Manager –
KSA Office.

Ehab is one of MEP House founders, He's Expert Electrical Engineer with 14 years' experience in design, executing, and cost estimating, planning & managing of MEP systems related to construction field (Building Services). More than 6 years of them in GCC.

A Sudan University graduate familiar with all standards, software's & tools that used in designing or executing of Electrical items in construction field. He attended many courses related to MEP Field such as Electrical & Fire fighting design & drafting (India), LEED GA & AP (Ksa), Certified PLC Programmer CPP (Siemens), SCADA Software (India), Project Management Professional (Ksa).

Ehab also is member of many international Associations & councils like:



- Sudanese Engineers Council.
 - Saudi Engineers Council.
 - National Fire Protection Association (NFPA).
- He gained his 14 experience throw working as junior, Senior Mechanical Engineer in many of MEP Contracting & Consultancy Firms like:
- ARAAK FOOD INDUSTRIES . - SUDAN.
 - SUDANESE ELECTRICITY DISTRIBUTION COMPANY - SUDAN.
 - MURTADA MUAZ CONSULTANCY - SUDAN.
 - 365 FOR ELECTROMECHANICAL Co - KSA.
 - ASAS FOR ELECTROMECHANICAL Co. - KSA.
 - ARCADIS DESIGN & CONSULTANCY - KSA

Eye On Our Team



Eng. Mohamed Abdallah Eltigani

Chief Executive Officer -
KSA Office

Mohamed is one of MEP House founders, He's Expert Mechanical Engineer with 16 years' experience in design, executing, and cost estimating, planning & managing of MEP systems related to construction field (Building Services). More than 6 years of them in GCC.

A Khartoum University graduate familiar with all standards, software's & tools that used in designing or executing of Mechanical items in construction field. He attended many courses related to MEP Field such as, project Management Professional (Sudan) & LEED Green Associated (KSA), project planning (Sudan).

Mohamed is member of many international Associations & councils like:



- American Society of Heating, Refrigerating & Air Conditioning Engineers (ASHRAE).
- National Fire Protection Association (NFPA).
- Sudanese Engineers Council.
- Saudi Engineers Council.

He gained his 16 experience throw working as junior, Senior Mechanical Engineer in many of MEP Contracting & Consultancy Firms like:

- ALTAN MUHENDISLIK MEP CONTRACTOR - TURKY / SUDAN.
- MURTADA MUAZ CONSULTANCY - SUDAN.
- ASAS FOR ELECTROMECHANICAL Co. - KSA.
- ARCHEN ENGINEERING CONSULTANCY. - KSA.



Eng. Ahmed Osman.

Renewable Energy Department
Manager – Sudan Office.

Ahmed is Expert RE Mechanical Engineer with 16 years' experience in design, executing, and cost estimating, planning & managing of Renewable Energy projects & technologies .

A Khartoum University graduate & master degree holder in Renewable Energy Technology familiar with all standards, software's & tools that used in designing or executing of Renewable Energy field specially solar systems . He attended many courses & Seminars related to Renewable Energy Field such as,

- Training course on Solar energy Applications - Gansu Natural Energy Research Institute/UNIDO International Solar Energy Center for Technology promotion & Transfer Ministry Of Commerce, People Republic Of China - 2018.
- Renewable Energy Technology (Solar, Wind and Biomass) New & renewable energy authority, Ministry of electricity & energy, Arab Republic of Egypt - 2016.



-
- Grid Emission Factor Calculation, Regional center for UNRFCCC, Kampala Uganda August 2015
 - Training program on Planning The Renewable Energy Transition Using Solar and Wind Maps 2014, IRENA&RCREEE Arab Republic of Egypt .
 - Representing Sudan in First Assembly of International Solar Alliance (ISA) as Sudan National Focal Point 2nd to 5th October 2018, New Delhi India.

He gained his huge experience from working as mechanical engineer in SUDAN National Electricity Corporation in many positions like :

- Senior RE Engineer - Renewable Energy - General Directorate for renewable and alternative Energy.
- Quality Engineer - Quality Department - Kosti Thermal power project(4*125MW) .
- Operation Engineer - Operation Department - Sennar Hydro Power Plant (2*7.5MW) .

Eye On Our Team



Eng. Mohammed Elmoatasim Taha.

Chief Executive Officer -
Oman Office.

Creative , systematic, inventive expert Mechanical Engineer with 11 year experience in the field managing projects & engaging with clients in both Sudanese & Omani markets.

A Khartoum University graduate with master degree in project management from American Academic of project management AAMP USA familiar with all standards, software's & tools that used in designing or executing of mechanical items in construction field. He participated in the accomplishment of many projects in Sudan & Oman such as government schools, Al-Rustaq fish markets & many commercial & private buildings .



Mohammed gained his experience in the field throw working for many companies inside & outside SUDAN such as:

- Gal far group aspire -OMAN.
- Ibn Bahlla Consultant Engineering Co - OMAN.
- LG Electronic liaison office -SUDAN.

Eye On Our Team



**Eng. Alam El-din
Ibrahim Fagiri.**

Chief Executive Officer–
Qatar Office.

Alam El-din is one of MEP House Qatar founders, He's Expert Mechanical Engineer with nearly 15 years' experience in design, executing, and cost estimating, planning & managing of MEP systems (Building Services). related to construction field More than 9 years of them in GCC.

A Sudan University for science and technology graduate familiar with all standards, software's & tools that used in designing or executing of Mechanical items in construction field. He attended many courses related to MEP Field.



Alam El-din is member of many international Associations & councils like:

- Sudanese Engineers Council.
- Qatar Engineering Committee.
- Qatar Civil Defense (QCCD).

He gained his 15 experience throw working as Senior Mechanical Engineer in many of Contracting & Consultancy Firms like:

- GULF SYSTEMS FOR CONTRACTING & SERVICES CO - QATAR.
- ARC DE TRIOMPHE- QATAR.
- CONSTRUCTION DEVELOPMENT CONTRACTING & TRADING - QATAR.
- ZAIN TRADING & CONTRACTING - QATAR.
- TAKO TEX INTERNATIONAL COMPANY - SUDAN.

Eye On Our Team



Eng. Ashraf Elhadi

Chief Executive Officer –
Emirates Office .

Ashraf is one of MEP House Emirates founders , He's Expert Civil Engineer with 13 years' experience in managing all steel work activities; applying designs & plans and liaising with client , consultant , sub contractors and all projects partners. Sharing responsibility for construction , quality , security , health and safety.

A Khartoum University graduate familiar with all standards, software's & tools that used in designing or executing in Steel Structural Projects. He Participated in the accomplishment of many projects in Sudan, Bahrain & United Arab Emirates such as:

- Marawi Dam - Sudan.
- Dry-Port Upgradation - AL Aweer ,Dubai- UAE.
- AL - Manar Mall extension - Ras Alkhaimah- UAE.
- SPL Warehouse -Emeries Aluminum smelter (EMAL) - EGA Emeritus Global Auminum, Abu Dhabi - UAE.



- Night Market at Palm Deira - Nakheel - UNEC Rasana, Dubai -UAE.
- SOUNDSTAGES COMPLEX AT DUBAI STUDIO CITY ,Dubai -UAE.
- 1.000.000 TPY Rolling mill plant - Hamriyah Steel FZC , Sharjah - UAE.
- SeAH UAE Pipe Mill Project at Al Ghayl Industrial Park, Ras Al Khaimah-UAE.
- SULB - Steel Mill Project- Kingdom of Bahrain.
- EMAL, Aluminum Smelter complex,Abu Dhabi- UAE.
- Emirates skycargo facilities at DWC AL Maktoum Airport, Dubai - UAE.
- United Steel Rebar & Wire Rod Rolling Mill Factory ,Fujairah-UAE .

He gained his 13 experience throw working as junior, Senior Civil Engineer in many of Steel Contracting Firms like:

- Unique Steel Contracting L.L.C - UAE.
- Amana Steel Buildings Contracting Co. L.L.C - UAE.
- University of Khartoum Consultancy Corporation (UKCC) - Sudan.

Eye On Our Team



Eng. Tamir
Abdalrahman.

Chief Executive Officer–
Kuwait Office.

Tamir is one of MEP House Kuwait founders , He's highly passionate PMC & Electrical professional with a strong record of leadership & delivery of services in power , oil , gas, construction , utilities , manufacturing , services and facility management sectors with challenging working environments for 14+ years, with detailed knowledge of design techniques and analysis methods, and detailed knowledge of the theory, content and application of standards, codes and guidelines as applicable for on/offshore. Knowledgeable in project coordination and execution skills. Highly innovative designer and highly skilled analyst. A Sudan University for science and technology graduate who is also a member of many international Associations & councils like:

- KUWAIT SOCIETY OF ENGINEERS
- SUDANESE COUNCIL OF ENGINEERS



He gained his 14+ experience throw working as junior, senior electrical engineer in many of industrial , oil & gas contracting & consultancy firms like:

- Kuwait Technical Consulting Bureau (KTCCB) – KUWAIT.
- Group Five Company (G5) - KUWAIT.
- Kenana Engineering & Technical Services (KETS) - SUDAN.
- Emirates Technical Associate (ETA-ASCON)- EMIRATES.
- Petro Energy E&P Co. Ltd. - SUDAN.
- Ministry of Oil & Mining (OEPA) . - SUDAN

Eye On Our Team



Eng. Ahmed Abd-Elmoniem.

Expert Associate Engineer –
KSA Office.

Managerial, technical and professional skilled & Certified Automation engineer with practical experience extended for 15 years in variety of work in industrial , Oil & Gas project management, design, construction, supervision, T&C backed up with strong educational, technical and practical experience.

A Sudan University graduate familiar with all standards, software's & tools that used in designing or executing of Electrical & Automation items in industrial , Oil & Gas field. He attended many courses related to his profession like : CISCO certified network associate (CCNA) India , Certified Automation Engineer (CAE) India , Theoretical and practical instrumentation calibration (Scotland) , Pipeline basic course & advanced (China).



Ahmed is member of many international Associations & councils like:

- PMI
- Sudanese Engineers Council.
- Saudi Engineers Council.

He gained his 15 experience throw working as junior, Senior Electrical Engineer in many of industrial , Oil & Gas Contracting & Consultancy Firms like:

- SAUDI ARAMCO - KSA
- CENTROID TECHNICAL SERVICES CO - SUDAN.
- PETROLINES FOR PIPES & ENGINEERING HOLDING-SUDAN.
- CNPC - SUDAN .
- DIU - SUDAN.

Eye On Our Team



Eng. Kamal Azayem.

Expert Associate Engineer –
KSA Office.

Managerial, technical and professional skilled building services (MEP) engineer with practical experience extended for 26 years in variety of work in MEP project management, design, construction, supervision, T& C backed up with strong educational, technical and practical experience.

A Kuwait university graduator & master degree holder is Highly experienced in management, planning, quality, risk management, administration, execution, monitoring and controlling of projects from proposal, development till handover.

In addition to the main contribution in founding sustainability, energy efficiency and Green Building Standards in Dubai through working as an expert, coordinator He is a member of Dubai Green Building committee and many other professional committees like:

- Board of Governors of ASHRAE UAE Chapter and Grass Root Government Activity Chair.
- Coordinator of Dubai Sustainability Committee.



- DUBAI Green economy partnership .
 - Expert in Demand Management for the Supreme Council of Energy.
 - Expert in District Cooling for the Regulatory & Supervisory Bureau's for Electricity & Water.
 - Expert in ESCO (Energy Services Companies) for the Regulatory & Supervisory Bureau's for Electricity & Water.
 - Assessor for the Dubai Green Tourism Award 2014 & Judge for the 2014 Climate Control Awards
- He gained his huge experience from working as mechanical engineer for MEP contracting companies, consultancy firms & Government like :
- DUBAI MUNICIPALITY - BUILDING DEPARTMENT - UAE
 - FAWAZ REFRIGRATION & A/C Co. - UAE
 - SENSAIR SERVICES LLC - UAE.
 - ARCHEN ENGINEERING CONSULTANTS - KSA.



RIYADH MUSCAT ABU-DHABI DOHA MANAMA KUWAIT.

KHARTOUM JUBA

info@mep-house.com

+249912330609

+966535035891

NAME OR LOGO